

Understanding Autism: A Way of Being: Using Applied Behavior Analysis

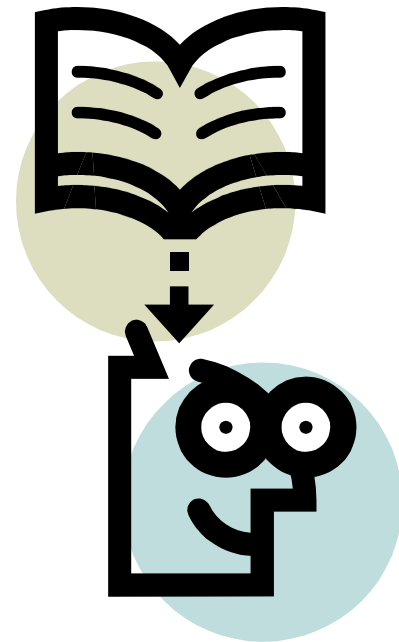
November 13, 2007

Rose Senior Center, Norwich, CT

Amy LeQuire, M.A., BCBA

Overview

- Characteristics of Autism
- What is ABA?
- ABA and Autism
- Resources





Characteristics of Autism

- Impaired speech/communication
- Impaired social skills
- Restricted interests, repetitive and stereotypic patterns of behavior

What is ABA?

- ABA is not.....

- Specific to autism
- A curriculum or a list of skills
- Synonymous with discrete-trial instruction

What is ABA?

- A science devoted to the understanding and improvement of human behavior.
 - Behavior = anything an organism can do that can be counted or measured.



Highlights

Systematic
Data driven
Reliable techniques

What is ABA?

- The 3-term contingency (or the timeline of behavior)

$$A \rightarrow B \rightarrow C$$

Antecedents precede Behavior followed by Consequences

ABA and Autism



Addressing some of the challenges of autism:

- Impaired speech/communication
 - difficulty understanding abstract concepts
 - Low motivation



ABA and Autism

Addressing some of the challenges of autism:

- Impaired social skills
 - Poor observation skills
 - difficulty learning in groups

ABA and Autism



Addressing some of the challenges of autism:

- Restricted interests, repetitive and stereotypic patterns of behavior
 - Self-stimulation interferes with learning
 - Hypo-versus hyper-responsive

ABA and Autism

Addressing some of the challenges of autism:

- Global issues
 - Limited repertoire of reinforcers
 - Slow rate of acquisition
 - Easily distracted
 - Unable to differentiate between relevant and irrelevant stimuli

ABA and Autism

- An intensive ABA program should:
 - have an individualized curriculum
 - be 30-40 hours a week of programming across all domains
 - be a long term commitment
 - commit the necessary resources
 - be BCBA supervised
 - provide frequent opportunities to respond
 - motivate and engage the student
 - evaluate progress frequently

Resources



- LEARN ABA School Support Network:
www.learnaba.org/forums
- Behavior Analyst Certification Board:
www.bacb.com
- Association for Behavior Analysis:
www.abainternational.org
- Journal of Applied Behavior Analysis:
www.seab.envmed.rochester.edu/jaba/
- The Assessment for Basic Language and Learning Skills: www.behavioranalysts.com