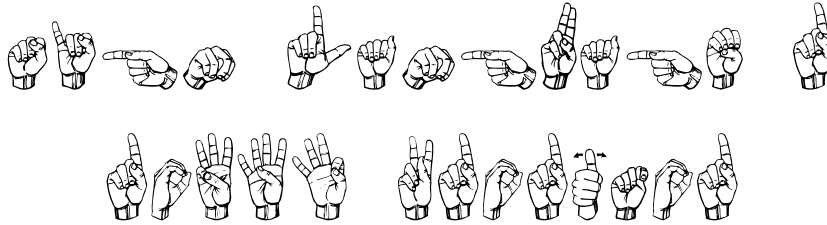


THREE RIVERS COMMUNITY COLLEGE
NORWICH, CT 06360



SIGN LANGUAGE I
10649 K101-T01

INSTRUCTOR: Paula Rosenberg Bell, M.Ed.

TITLE: Sign Language I 3 Credits
Mondays/Wednesdays: 1/21/09 - 5/18/09, 3:30 PM - 4:45 PM, Rm. D222

COURSE DESCRIPTION: This course introduces students to American Sign Language (ASL), its principles and performance. Specifically, students learn the vocabulary of signs, the concepts to which they refer inflection through body movement, facial expression and gesture, and finger spelling. Students learn to develop a personal style and to translate. (Course does not fulfill foreign language requirement.)

INTRODUCTION:

- Sign Language I is a beginning level course in the manual language used by the Deaf Community. Various modes of Sign Language are introduced with emphasis on American Sign Language and exposure to Manually Coded English.
- Focus is on student receptive and expressive fingerspelling and signing. Cultural aspects of Deafness are integrated in this beginner's course.

MAJOR COURSE ACTIVITIES:

1. Sign (expressively and/or receptively recognize) approximately 600 signed entities individually, or within the class situation, employing quizzes, games, demonstrations, and short conversations.
2. Write an essay briefly describing, comparing, and contrasting American Sign Language and Manually Coded English as discussed in this course. (This can be done in one sentence!)
3. Demonstrate to the class and instructor signed sentences and presentations for quizzes, exams, projects, and conversations.
4. Log three television shows (news, comedy, drama/action) - viewed without sound, captions, or prior knowledge of material. Each program must be viewed for a minimum of 30 minutes. An account of each experience (**focusing on feelings and reactions**) is to be included in the log.
5. Class **will not** meet on April 13th and April 15th. You will have an option of attending a signed performance of *RISD 14 YEARS IN REVIEW* on April 2/3 (your choice of date) at the R.I. School for the Deaf in Providence, R.I., view a signed event* of your choice (subject to the instructor's approval), or attend an event within the Deaf Community.* A paper (BRIEF) describing your experience and feelings is required. Viewing of/participating in an event is a requirement. Failure to do so will result in an unexcused absence and a grade of 0 (zero) for the assignment (5% of the course grade). Viewing of/participating in an event and experience



