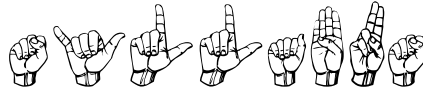


Three Rivers Community College  
Norwich–New London Turnpike  
Norwich, CT 06360



## SYLLABUS

American Sign Language I

ASL\* K 101 TR1

CRN: 11634

Spring 2010

Mondays/Wednesdays 3:30–4:45; Room D 222

Instructor: Paula Rosenberg Bell, M.Ed.

3.0 Credits

### **COURSE DESCRIPTION: ASL\* K101 AMERICAN SIGN LANGUAGE I**

- This is a first course of study of American Sign Language, the language used by the Deaf Community in the United States. ASL I introduces students to the fundamentals of ASL grammar, vocabulary, fingerspelling, numbers, and visual-gestural communication. Introduction to Deaf Culture is integrated into this beginning level course.



## GOALS & OBJECTIVES

Upon successful completion of American Sign Language I, students will be competent ~ receptively and expressively ~ in the following areas:

- Demonstrate the ability to select, produce, and use appropriate sign vocabulary for clear and accurate communication.
- Apply the appropriate grammar and syntax by using facial expression and body language to communicate in sign language effectively.
- Develop understanding of Deaf culture, differences between Deaf and Hearing cultures, and insight of the experiences of being deaf when communicating in a hearing world.

## MATERIALS:

- Required Text: **LEARNING AMERICAN SIGN LANGUAGE (2<sup>nd</sup> edition)** – Tom Humphries & Carol Padden.
- Supplemental materials will be provided by the instructor.
- Videos and supplementary materials used in class.

## VALUABLE RESOURCES:

[www.aslpro.com](http://www.aslpro.com)  
[www.lifeprint.com](http://www.lifeprint.com)  
[www.signingsavvy.com](http://www.signingsavvy.com)

## PROCEDURE:

1. Classroom instruction of language component.
2. Modeling of target language.
3. Practice using target language in and outside of class.
4. Interaction with native users of target language.
5. In-class discussions, activities and presentations.
6. Off campus activities with written papers.
7. Quizzes & Exams



## REQUIREMENTS:

- HAVE FUN!! This is a great language to learn!
- Participate.
- Be prepared to learn.
- Complete all assignments ~ they are given to support your learning. All assignments and their due dates are in the agenda. Written assignments may be handed in early. The essay and logs (the **only** two written assignments), if late, will be graded **one full letter grade** lower for each class date the assignment is late.

## METHOD OF EVALUATION

Students gain proficiency / mastery at different rates. Each student is capable of achieving proficiency / mastery in ASL and will be given every opportunity to do so. All assessments are cumulative. I use a point system for grading:

4	A (94 - 100)	4.00 QP
4 -	A - (90 - 93)	3.67 QP
3+	B+ (87 - 89)	3.33 QP
3	B (84 - 86)	3.00 QP
3 -	B- (80 - 83)	2.67 QP
2 +	C+ (77 - 79)	2.33 QP
2	C (74 - 76)	2.00 QP
2 -	C- (70 - 73)	1.67 QP
1+	D+ (67 - 69)	1.33 QP
1	D (64 - 67)	1.00 QP
1-	D- (60 - 63)	.67 QP
0	F (0 - 59)	.00 QP
NA	Not Applicable	
	Participation/ Attendance	35%
	Quizzes	20%
	Midterm	10%
	Final	15%
	TV Logs	5%
	Essay	5%
	Presentation	10%



- **Classroom Participation - 35%**

In order to learn American Sign Language, one MUST participate in using it. I recognize that there are extenuating circumstances where one must miss a class. Please notify me in advance of class if you are going to be absent. (See my contact card for information). Leaving class early by 15 minutes or arriving late by 15 minutes will result in a lowered participation grade for that class. Attendance will be recorded.

- **Exams - Midterm 10% (3/31/10)/Final 15% (5/17/10)**

There will be two exams. The midterm will include the evaluation of expressive/receptive skills as well as a written component; the final will be an interactive one where the students demonstrate their knowledge of American Sign Language and Deaf Culture. There will be no make-up for the final. The midterm must be made up within one week unless I have certification of hospitalization for you or a member of your family or a death in the immediate family.

- **Quizzes - 20% (6)**

Quizzes will be used to assess your progress and to show you where you need to focus your energy. There will be 6 quizzes. Each quiz will include a signing portion and/or questions on other aspects of correct usage of ASL.

- **Logs - 5% (Due 5/3/10)**

Each student will be required to watch three television shows. Each show must be viewed for at least 30 minutes including commercials. With the exception of the news, each must be a show that you are not familiar with. Neither volume nor closed-captions may be used. (News, drama, comedy only.... **NO sports events, cartoons, animated shows, claymation, 'how to' shows, game shows!**) After watching the show, a paper is to be written describing your experience. Each paper will be (one) 1 page typed or neatly written using the following guidelines: (See the packet TV Viewing Log)

- ❖ Each paper is a representation of YOUR thoughts. YOUR feelings or beliefs, YOUR impressions, YOUR agreements / disagreements and why.
- ❖ How has this experience / activity impacted you?
- ❖ How will you use this information?
- ❖ Does this information / activity change the way that you think?
- ❖ How and why?



•**Essay** – 5%

An essay must be written describing, comparing, and contrasting American Sign Language and Manually Coded English. **Hint:** This can (and has been done) in one sentence!

•**Presentation** – 10%

Each student will be required to sign for a minimum of 1 minute/maximum of 3 minutes on a topic of their choosing. This may be done alone, with a partner, or in a triad. There must be a visual associated with the presentation. Failure to adhere to the minimum time requirement will result in the lowering of the presentation grade by two (2) full letter grades.

**MAKE UP WORK:**

1. Missed quizzes **MUST** be made up as soon as possible and need to be scheduled with the instructor.
2. Missed in-class activities cannot be made up due to the nature of the activities.
3. There is no make-up for the final exam; the midterm must be made up within one week.
4. This course does not offer extra credit work. A bonus question is offered on the midterm. (Anyone taking a make up midterm will not receive the bonus question.)

**MISCELLANEOUS EXPECTATIONS AND INFORMATION:**

Class begins promptly at 3:30 p.m. and procedures will not be delayed to accommodate late comers. Consistent practice using sign is of utmost importance if students are to master the language. Therefore, students will be expected to spend time outside of class practicing the language of native signers which students will find helpful to view. Any public library will have or be able to get through inter-library loan videos and books on ASL. You will also be notified of any events where you can have the opportunity to use your new language skills.

**EARLY WARNING:**

If you are having ANY difficulty, for any reason, please see me as early as possible to discuss ways of assisting you to be successful in this class. I will notify you by the midterm (3/31) if your grade is lower than average (C 74–76%).

**CANCELLATION (by Instructor):** If I need to cancel a class, I will contact each student via email or phone. Unless the college cancels classes (ie due to weather), expect to meet for class.



## WHAT YOU CAN EXPECT FROM ME:

- To arrive to class on time
  - To be available **by appointment** for discussion on concerns or clarifications of material.
- NOTE:** I teach another Level I class at Quinebaug Valley Community College on Monday evenings and am therefore never available on a Monday.
- To be prepared;
  - To hold class for the entire class period;
  - To return corrected work, as often as possible, within one week after it is collected;
  - To give you my best effort in sharing what I know about American Sign Language and the Deaf; and
  - To work with each individual by providing guidance to successfully complete this course.

## WITHDRAWAL FROM CLASS: (as found in the Registration Guidelines)


Course withdrawals are accepted up until the week before classes end. Specific dates are posted in the academic calendar and withdrawal forms are available online or at the Registrar's office. The withdrawal does not have to be signed by the instructor but it is strongly recommended that you speak with your instructor before withdrawing. If you are receiving financial aid you must contact their office for approval before withdrawing. If necessary, you can withdraw over the phone by calling the Registrar's Office at 860-892-5756.

**Students receiving Financial Aid or Veteran's Benefits must contact those offices prior to withdrawing from classes.**

## DISABILITIES STATEMENT:

This course complies with the guidelines set forth under the ADA. Should you need assistance and/or accommodations please privately notify me and provide me with the necessary paperwork during the first two classes. I am unable to make accommodations without the official documentation. If you have not already done so, please be sure to notify Student Development and Services, which coordinates services to students with disabilities, or one of the following individuals: Students with learning disabilities or attention deficit disorder should contact Chris Scarborough at 860.892.5751 or by email at [cscarborough@trcc.commnet.edu](mailto:cscarborough@trcc.commnet.edu). Students with a physical, medical or psychiatric disability contact Kathleen Gray at 860.885.2328 or by email at [kgray@trcc.commnet.edu](mailto:kgray@trcc.commnet.edu) or Matt Liscum at 860.383.5240 or by email at [mliscum@trcc.commnet.edu](mailto:mliscum@trcc.commnet.edu).



DATE 	Lesson	Q u i z	E s s a y	T V L o g s	M i d t e r m	F i n a l	Presentation	Home- work Assign- ments
1/25 (M)	ABC & Concepts							
1/27 (W)	ABC & Concepts							See
2/1 (M)	1	Yes						Agenda
2/3 (W)	2							
2/8 (M)	3							
2/10 (W)	3							
2/15 (M)	NO CLASS							
2/17 (W)	4	Yes						
2/22 (M)	4							
2/24 (W)	5							
3/1 (M)	5							
3/3 (W)	Review	Yes						
3/8 (M)	NO CLASS							
3/10 (W)	NO CLASS							
3/15 (M)	6							
3/17 (W)	6							
3/22 (M)	7							
3/24 (W)	7	Yes						
3/29 (M)	Review							
3/31 (W)	Midterm				Yes			
4/5 (M)	Numbers							
4/7 (W)	8							
4/12 (M)	9							
4/14 (W)	9							
4/19 (M)	10							
4/21 (W)	10							
4/26 (M)	11	Yes	Yes					
4/28 (W)	11							
5/3 (M)	Deaf Awareness	Yes		Yes				
5/5 (W)	12							
5/10&5/12	Presentations						Yes	
5/17 (M)	Final					Yes		



**LEARN and have FUN!**  
**Experience a great language!**  
**Let your fingers do the talking!**  
**‘Talk’ to the hands!**

