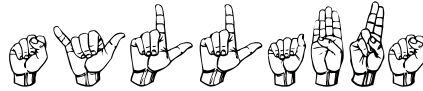


Three Rivers Community College
Norwich–New London Turnpike
Norwich, CT 06360



SYLLABUS

American Sign Language I
ASL* K 101 TR1
CRN: 31312
Fall 2010

Mondays/Wednesdays 3:30–4:45; Room D 226
Instructor: Paula Rosenberg Bell, M.Ed.
3.0 Credits

COURSE DESCRIPTION: ASL* K101 AMERICAN SIGN LANGUAGE I

- This is a first course of study of American Sign Language, the language used by the Deaf Community in the United States. ASL I introduces students to the fundamentals of ASL grammar, vocabulary, fingerspelling, numbers, and visual-gestural communication. Introduction to Deaf Culture is integrated into this beginning level course.



GOALS & OBJECTIVES

Upon successful completion of American Sign Language I, students will be competent ~
receptively and expressively ~ in the following areas:

- Demonstrate the ability to select, produce, and use appropriate sign vocabulary for clear and accurate communication.
- Apply the appropriate grammar and syntax by using facial expression and body language to communicate in sign language effectively.
- Develop understanding of Deaf culture, differences between Deaf and Hearing cultures, and insight of the experiences of being deaf when communicating in a hearing world.

MATERIALS:

- Required Text: **LEARNING AMERICAN SIGN LANGUAGE (2nd edition)** – Tom Humphries & Carol Padden.
- Supplemental materials will be provided by the instructor.
- Videos and supplementary materials used in class.

VALUABLE RESOURCES:

www.aslpro.com
www.lifeprint.com
www.signingsavvy.com

PROCEDURE:

1. Classroom instruction of language component.
2. Modeling of target language.
3. Practice using target language in and outside of class.
4. Interaction with native users of target language.
5. In-class discussions, activities and presentations.
6. Off campus activities with written papers.
7. Quizzes & Exams



REQUIREMENTS:

- HAVE FUN!! This is a great language to learn!
- Participate.
- Be prepared to learn.
- Complete all assignments ~ they are given to support your learning. All assignments and their due dates are in the agenda. Written assignments may be handed in early. The essay and logs (the **only** two written assignments), if late, will be graded **one full letter grade** lower for each class date the assignment is late.

METHOD OF EVALUATION

Students gain proficiency / mastery at different rates. Each student is capable of achieving proficiency / mastery in ASL and will be given every opportunity to do so. All assessments are cumulative. I use a point system for grading:

4	A (94 - 100)	4.00 QP
4 -	A - (90 - 93)	3.67 QP
3+	B+ (87 - 89)	3.33 QP
3	B (84 - 86)	3.00 QP
3 -	B- (80 - 83)	2.67 QP
2 +	C+ (77 - 79)	2.33 QP
2	C (74 - 76)	2.00 QP
2 -	C- (70 - 73)	1.67 QP
1+	D+ (67 - 69)	1.33 QP
1	D (64 - 67)	1.00 QP
1-	D- (60 - 63)	.67 QP
0	F (0 - 59)	.00 QP
NA	Not Applicable	
	Participation/ Attendance	35%
	Quizzes	20%
	Midterm	10%
	Final	15%
	TV Logs	5%
	Essay	5%
	Presentation	10%



- **Classroom Participation - 35%**

In order to learn American Sign Language, one MUST participate in using it. I recognize that there are extenuating circumstances where one must miss a class. Please notify me in advance of class if you are going to be absent. (See my contact card for information). Leaving class early by 15 minutes or arriving late by 15 minutes will result in a lowered participation grade for that class. Attendance will be recorded.

- **Exams - Midterm 10% (10/20/10)/Final 15% (12/15/10)**

There will be two exams. The midterm will include the evaluation of expressive/receptive skills as well as a written component; the final will be an interactive one where the students demonstrate their knowledge of American Sign Language and Deaf Culture. The questions for THROUGH DEAF EYES will be counted as part of the final. There will be no make-up for the final. The midterm must be made up within one week unless I have certification of hospitalization for you or a member of your family or a death in the immediate family.

- **Quizzes - 20% (6)**

Quizzes will be used to assess your progress and to show you where you need to focus your energy. There will be 6 quizzes. You are signing for your classmates unless otherwise noted.

- **Logs - 5% (Due 11/29/10)**

Each student will be required to watch three television shows. Each show must be viewed for at least 30 minutes including commercials. With the exception of the news, each must be a show that you are not familiar with. Neither volume nor closed-captions may be used. (News, drama, comedy only... **NO sports events, cartoons, animated shows, claymation, 'how to' shows, game shows!**) After watching the show, a paper is to be written describing your experience. Each paper will be (one) 1 page typed or neatly written using the following guidelines: (See the packet TV Viewing Log)

- ❖ Each paper is a representation of YOUR thoughts. YOUR feelings or beliefs, YOUR impressions, YOUR agreements / disagreements and why.
- ❖ How has this experience / activity impacted you?
- ❖ How will you use this information?
- ❖ Does this information / activity change the way that you think?
- ❖ How and why?



•**Essay – 5% (Due 11/22/10)**

An essay must be written describing, comparing, and contrasting American Sign Language and Manually Coded English. **Hint:** This can (and has been done) in one sentence!

•**Presentation – 10% (Due 12/6/10, 12/8/10)**

Each student will be required to sign for a minimum of 1 minute/maximum of 3 minutes on a topic of their choosing. This may be done alone, with a partner, or in a triad. There must be a visual associated with the presentation. Failure to adhere to the minimum time requirement will result in the lowering of the presentation grade by two (2) full letter grades.

MAKE UP WORK:

1. Missed quizzes **MUST** be made up as soon as possible and need to be scheduled with the instructor.
2. Missed in-class activities cannot be made up due to the nature of the activities.
3. There is no make-up for the final exam; the midterm must be made up within one week.
4. This course does not offer extra credit work. A bonus question is offered on the midterm. (Anyone taking a make up midterm will not receive the bonus question.)

MISCELLANEOUS EXPECTATIONS AND INFORMATION:

Class begins promptly at 3:30 p.m. and procedures will not be delayed to accommodate late comers. Consistent practice using sign is of utmost importance if students are to master the language. Therefore, students will be expected to spend time outside of class practicing the language of native signers which students will find helpful to view. Any public library will have or be able to get through inter-library loan videos and books on ASL. You will also be notified of any events where you can have the opportunity to use your new language skills.

EARLY WARNING:

If you are having ANY difficulty, for any reason, please see me as early as possible to discuss ways of assisting you to be successful in this class. I will notify you by the midterm (10/20) if your grade is lower than average (C 74–76%).

CANCELLATION (by Instructor): If I need to cancel a class, I will contact each student via email or phone. Unless the college cancels classes (ie due to weather), expect to meet for class.



WHAT YOU CAN EXPECT FROM ME:

- To arrive to class on time
- To be available **by appointment** for discussion on concerns or clarifications of material. Discussion can be in person, on the phone, or via Skype.

NOTE: I teach another Level I class at Quinebaug Valley Community College on Monday evenings and am therefore never available on a Monday.

- To be prepared;
- To hold class for the entire class period;
- To return corrected work, as often as possible, within one week after it is collected;
- To give you my best effort in sharing what I know about American Sign Language and the Deaf; and
- To work with each individual by providing guidance to successfully complete this course.

WITHDRAWAL FROM CLASS: (as found in the Registration Guidelines)

Course withdrawals are accepted up until the week before classes end. Specific dates are posted in the academic calendar and withdrawal forms are available online or at the Registrar's office. The withdrawal does not have to be signed by the instructor but it is strongly recommended that you speak with your instructor before withdrawing. If you are receiving financial aid you must contact their office for approval before withdrawing. If necessary, you can withdraw over the phone by calling the Registrar's Office at 860-892-5756.

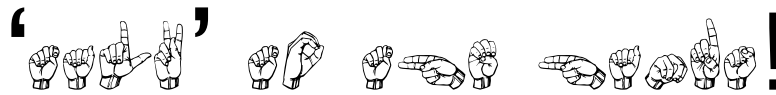
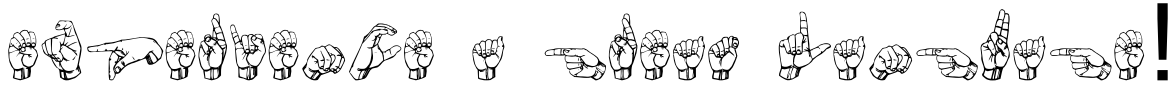
Students receiving Financial Aid or Veteran's Benefits must contact those offices prior to withdrawing from classes.

DISABILITIES STATEMENT:

This course complies with the guidelines set forth under the ADA. Should you need assistance and/or accommodations please privately notify me and provide me with the necessary paperwork during the first two classes. I am unable to make accommodations without the official documentation. If you have not already done so, please be sure to notify Student Development and Services, which coordinates services to students with disabilities, or one of the following individuals: Students with learning disabilities or attention deficit disorder should contact Chris Scarborough at 860.892.5751 or by email at cscarborough@trcc.commnet.edu. Students with a physical, medical or psychiatric disability contact Kathleen Gray at 860.885.2328 or by email at kgray@trcc.commnet.edu or Matt Liscum at 860.383.5240 or by email at mliscum@trcc.commnet.edu.



DATE 	Lesson	Q u i z	E s s a y	T V L o g s	M i d t e r m	F i n a l	Presentation	Home- work Assign- ments
8/30 (M)	ABC & Concepts							
9/1 (W)	ABC & Concepts							See
9/6 (M)	NO CLASS							Agenda
9/8 (W)	1	Q 1						
9/13 (M)	2							
9/15 (W)	3							
9/20 (M)	3							
9/22 (W)	4	Q 2						
9/27 (M)	4							
9/29 (W)	5							
10/4 (M)	5							
10/6 (W)	6	Q 3						
10/11 (M)	6							
10/13 (W)	7							
10/18 (M)	7							
10/20 (W)	Midterm				Yes			
10/25 (M)	Numbers							
10/27 (W)	Holidays	Q 4						
11/1 (M)	8							
11/3 (W)	8							
11/8 (M)	Night Class							
11/10 (W)	NO CLASS							
11/15 (M)	9							
11/17 (W)	10							
11/22 (M)	11	Q 5	Yes					
11/29 (M)	Deaf Awareness			Yes				
12/1 (W)	D A Part 2	Q 6						
12/6 (M)	Presentations						Yes	
12/8 (W)	Presentations						Yes	
12/13 (M)	12							
12/15 (W)	Final					Yes		



LEARN and have FUN!
Experience a great language!
Let your fingers do the talking!
‘Talk’ to the hands!



THREE RIVERS COMMUNITY COLLEGE
NORWICH, CT

AMERICAN SIGN LANGUAGE I: ASL* K 101 TR1

INSTRUCTOR: Paula Rosenberg Bell, M.Ed.

FALL SESSION: 2010

Room D 226; 3:30-4:45, Mondays/Wednesdays 8/30/10-12/15/10

NOTE: 12/20 will be used for a make-up date (if needed).

DATES

LESSON

AGENDA



8/30 (M)
9/1 (W)

ABCs

Deaf Awareness Survey; Introductions;
'Housekeeping'; Introductions to the course
Requirements; "Deaf Donald"; Dactylology;
ABCs; Name signs; Nonverbal communication

ASSIGNMENT: Develop name sign (Due:9/8);
prepare one (3-5 letters) word to fingerspell for
the quiz (Due: 9/8).

9/6 (M)

NO CLASS

Labor Day: College Closed

9/8 (W)
9/13 (M)

Unit 1
Unit 2

Review; Quiz 1 ~ Fingerspelling; Gender;
Referent; Questions, Negating,
Confirming; Simple Sentence Structure;
Introduce Units 1 & 2; Drill

ASSIGNMENT: Read/View/Practice Units 1 & 2
vocabulary (Due: 9/15)

9/15 (W)
9/20 (M)

Unit 3

Review vocab/concepts; Unit 3 ; Drill; Facial
Charades; Fingerspelling Relay

ASSIGNMENT: Read/View/Practice Unit 3;
prepare one (3-words) sentence for Quiz 2
(Due: 9/22).



9/22 (W) 9/27 (M)	Unit 4	Review vocab/concepts; Quiz 2; Introduce 'directional verbs'; Introduce Unit 4 vocabulary; "Reporter"; Drill
		ASSIGNMENT: Read/View/Practice Unit 3; Review previous vocabulary (Due: 9/29).
9/29 (W) 10/4 (M)	Unit 5	Review vocabulary; Introduce compound/contracted signs; topic markers; initialized signs; Introduce Unit 5; Drill
		ASSIGNMENT: Review Units 1–5 Quiz 3; Prepare one sentence with topic indicator (clearly presented!) for quiz on vocab/concepts Units 1–5. (Due: 10/6).
10/6 (W) 10/11 (M)	Unit 6	Review vocab/concepts; Quiz 3; Introduce noun–verb pairs; Introduce Unit 6 vocabulary; Play 'Beginning With the Ending'.
		ASSIGNMENT: Read/View/Practice Unit 6; Review previous lessons for SIGNO; Complete SIGNO sheets (Due: 10/13)
		NOTE: Begin to prepare for the midterm (ABCs, Units 1–7); Prepare one (3–5 letters) word AND one (3–5 words) ASL grammatically correct sentence for midterm (Due: 10/20)
10/13 (W) 10/18 (M)	Unit 7	Review vocab/concepts; Introduce modals; adjective placement; SIGNO; Introduce Unit 7; Drill
		ASSIGNMENT: Read/View/Practice Unit 7; Review all previous lessons for instructor given story quiz (Due: 10/27)/Signing Bee
10/20 (W)	Midterm	Midterm



10/25 (M) 10/27 (W)	Numbers	<p>Introduce Numbers/Vocab; Drill Review vocab/concepts; Story Quiz (Quiz 4); Signing Bee</p> <p>ASSIGNMENT: Prepare an 8–10 word sentence for ‘Gossip’ (Due: 11/1)</p>
11/1 (M) 11/3 (W)	Unit 8	<p>“Gossip”; Introduce Classifiers; Unit 8; Drill</p> <p>ASSIGNMENT: Read/View/Practice Unit 8; Prepare a description of an object ~ the class will guess the object (Due: 11/15)</p>
11/8		<p>Class will meet with Pat Clark’s ASL I at 6:30 PM to view THROUGH DEAF EYES. This will be the equivalent of two afternoon classes. There will be NO afternoon class on Monday 11/8 or Wednesday 11/10. <u>Viewing this documentary is mandatory. If you are unable to attend the evening class please see me.</u></p> <p>ASSIGNMENT: View the documentary, answer questions on the worksheet provided. Will count as half of your Final Exam</p>
11/10	No Class	
11/15 (M) 11/17 (W)	Unit 9 Unit 10	<p>Review vocab/concepts; Guess the Object; Introduce Unit 9; Drill; Introduce Unit 10; Drill</p> <p>ASSIGNMENT: Read/View/Practice Unit 9/10 Review all previous vocab/concepts for Quiz 5 (11/22); Prepare a sentence for the quiz (Due: 4/26).</p> <p>ASSIGNMENT: <u>Briefly</u> describe, compare, and contrast ASL and MCE. This can be done in one sentence! (Due: 11/22)</p>



11/22 (M)	Unit 11	Review vocab/concepts; Q5; Discuss essays; Loan signs; Introduce Unit 11; Drill
		ASSIGNMENT: Read/View/Practice Unit 11; Complete the 3 TV viewing logs (to be discussed 11/29)
		ASSIGNMENT: Begin preparing a short (no more than 3 mins but no less than 1 min) poem, joke, story, song, etc. for 12/6–8. You may work alone, in pairs, or in a triad. See the instructor for length of time.
11/29 (M) 12/1 (W)	Deaf Awareness	Discussion of TV viewings; informational Session about deafness; Fingerspelling Quiz 6.
		ASSIGNMENT: Prepare a three – six sentence description of an event for the class to guess (Due: 12/13).
		ASSIGNMENT: Continue preparation for 12/6–8 presentation.
12/6 (M)	Presentations	Presentations
12/8 (W)	Presentations	Presentations
12/13 (M)	Unit 12	‘Guess the Event’; Money Rules; Introduce Unit 12; Drill
12/15 (W)	Final	ASSIGNMENT: Review for final! Final; Certificates; ‘Optional Vocabulary’

NOTE: Following the final exam, everyone must remain for the awarding of certificates. ‘Optional Vocabulary’ will be taught last.

