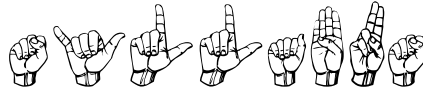


Three Rivers Community College
Norwich–New London Turnpike
Norwich, CT 06360



SYLLABUS

American Sign Language I

ASL* K 101 TR1

CRN: 11634

Spring 2012

Mondays/Wednesdays 1/23/12–5/14/12 @ 3:30–4:45; Room D 224

Instructor: Paula Rosenberg Bell, M.Ed.

3.0 Credits

NOTE: If needed (due to weather), Wed. 5/16/12 will be used as a make-up day.

COURSE DESCRIPTION: ASL* K101 AMERICAN SIGN LANGUAGE I

- This is a first course of study of American Sign Language, the language used by the Deaf Community in the United States. ASL I introduces students to the fundamentals of ASL grammar, vocabulary, fingerspelling, numbers, and visual-gestural communication. Introduction to Deaf Culture is integrated into this beginning level course.



GOALS & OBJECTIVES

Upon successful completion of American Sign Language I, students will be competent ~ receptively and expressively ~ in the following areas:

- Demonstrate the ability to select, produce, and use appropriate sign vocabulary for clear and accurate communication.
- Apply the appropriate grammar and syntax by using facial expression and body language to communicate in sign language effectively.
- Develop understanding of Deaf culture, differences between Deaf and Hearing cultures, and insight of the experiences of being deaf when communicating in a hearing world.

MATERIALS:

- Required Text: **LEARNING AMERICAN SIGN LANGUAGE (2nd edition)** – Tom Humphries & Carol Padden.
- Supplemental materials will be provided by the instructor.
- Videos and supplementary materials used in class.

VALUABLE RESOURCES:

www.aslpro.com
www.lifeprint.com
www.signingsavvy.com

PROCEDURE:

1. Classroom instruction of language component.
2. Modeling of target language.
3. Practice using target language in and outside of class.
4. Interaction with native users of target language.
5. In-class discussions, activities and presentations.
6. Off campus activities with written papers.
7. Quizzes & Exams



REQUIREMENTS:

- HAVE FUN!! This is a great language to learn!
- Participate.
- Be prepared to learn.
- Complete all assignments ~ they are given to support your learning. All assignments and their due dates are in the agenda. Written assignments may be handed in early. Assignments, if late, will be graded **two full letter grades** lower for each class date the assignment is late ~ **NO EXTENSIONS.**

METHOD OF EVALUATION

Students gain proficiency / mastery at different rates. Each student is capable of achieving proficiency / mastery in ASL and will be given every opportunity to do so. All assessments are cumulative. I use a point system for grading:

4	A (94 -100)	4.00 QP
4 -	A - (90 - 93)	3.67 QP
3+	B+ (87 - 89)	3.33 QP
3	B (84 - 86)	3.00 QP
3 -	B- (80 - 83)	2.67 QP
2 +	C+ (77 - 79)	2.33 QP
2	C (74 - 76)	2.00 QP
2 -	C- (70 - 73)	1.67 QP
1+	D+ (67 - 69)	1.33 QP
1	D (64 - 67)	1.00 QP
1-	D- (60 - 63)	.67 QP
0	F (0 - 59)	.00 QP
NA	Not Applicable	
	Participation/ Attendance	30%
	Quizzes	20%
	Midterm	10%
	Final (2 parts)	20%
	TV Logs	5%
	Essay	5%
	Presentation	10%



- **Classroom Participation - 30%**

In order to learn American Sign Language, one MUST participate in using it. Attendance will be recorded. I recognize that there are extenuating circumstances where one must miss a class. Please notify me in advance of class if you are going to be absent. (See my contact card for information.) You will be allowed **two (2) unexcused absences**. Additional absences will be recorded as a zero (0). Leaving class early by 15 minutes (or more) or arriving late by 15 minutes (or more) will result in a lowered participation grade for that class. (**NOTE: The participation grade will lower cumulatively for each occurrence; on the 5th occurrence the participation grade will be entered as a '0'. Subsequent occurrences will be entered as '2' for participation.**) Class participation will be graded on 5 points at every class meeting as follows: Preparation, Timeliness, Class Interaction, Focus*, Responses/ Volunteerism. * If you are using your cell phone or the like, you will lose participation points and may be asked to leave the classroom.

- **Exams - Midterm: 10% (3/14/12-Wed.); Final: 20% (10% MFDD from representation of book/movie due plus explanation 4/30/12-Wed., 10% Interactive on 5/14/12-Mon.)**

There will be two exams. The midterm will include the evaluation of expressive/receptive skills as well as a written component; half of the final will be an interactive one where the students demonstrate their knowledge of American Sign Language and Deaf Culture. The other half of the final requires students to view a movie/documentary related to deafness or read a book related to deafness and then create a representation in the form of a Mother Father Deaf Day card to be shared with the class on 4/30/12. (**Materials will be available to borrow on 2/15/12 and must be returned no later than 4/30/12. Failure to return materials by 4/30/12 will result in a grade of 50% (F) for this part of the exam.**) There will be no make-up for the final. The midterm must be made up within one week unless I have certification of hospitalization for you or a member of your family or a death in the immediate family.

- **Quizzes - 20% (5)**

Quizzes will be used to assess your progress and to show you where you need to focus your energy. There will be 6 quizzes (lowest grade will be dropped). You are signing for your classmates unless otherwise noted.

- **Logs - 5% (Due 4/25/12 ~ discussed 4/30/12)**

Each student will be required to watch three television shows. Each show must be viewed for at least 30 minutes including commercials. With the exception of the news, each must be a show that you are **not** familiar with. Neither volume nor closed-captions may be used. (News, drama/action, comedy only.... **NO sports events, cartoons, animated shows, claymation, 'how to' shows, game shows, talk shows, award shows, etc!**) This assignment is to build empathy ~ I do not want a summary of your viewings. After watching



the show, a paper is to be written describing your experience/your feelings (see next page). Each viewing will be one (1) page typed or neatly written using the following guidelines and in the TV Viewing Log packet. Points will be taken off for spelling errors and grammatical mistakes. Hint: Utilize spell check/grammar check programs or a dictionary; proofread what has been written.

- ❖ Each paper is a representation of YOUR thoughts. YOUR feelings or beliefs, YOUR impressions, YOUR agreements / disagreements and why.
- ❖ How has this experience / activity impacted you?
- ❖ How will you use this information?
- ❖ Does this information / activity change the way that you think?
- ❖ How and why?

•**Essay** – 5% (Due 4/11/12)

A packet of articles will be handed out and made available on Blackboard. You are to use these articles to assist with writing an essay. There are two categories of articles. Some are serious documentations of particular topics and others are less serious and often perceptions or experiences from Deaf individuals. Pick one article from each category to compare and contrast for the essay. Points will be taken off for spelling errors and grammatical mistakes. Hint: Utilize spell check/grammar check programs or a dictionary. Proofread what has been written.

The focus of the essay could be one of the following:

- How did this information change or impact the deaf/Deaf community?
- How do you feel this information impacts the deaf/Deaf community in the 21st century?
- How do you think the deaf/Deaf community feels about this topic?

•**Presentation** – 10% (Due 5/7/12, 5/9/12)

Each student will be required to sign for a minimum of 1 minute/maximum of 3 minutes on a topic of their choosing. This may be done alone, with a partner, or in a triad. (See instructor for partner and triad times) There **must** be a visual associated with the presentation. Failure to adhere to the minimum time requirement will result in a presentation grade of zero (0).

MAKE-UP WORK:

1. All assignments are due on or before the date posted; no extensions.
2. Missed quizzes need to be scheduled with the instructor and made up within one week. Any quiz that is not made up will receive a grade of 0. It is the responsibility of the student to make the arrangements.
3. Missed in-class activities cannot be made up due to the nature of the activities.
4. There is no make-up for the final exam; the midterm must be made up within one week.



5. This course does not offer extra credit work. A bonus question is offered on the midterm. (Anyone taking a make-up midterm will not receive the bonus question.)

PLAGIARISM

Any student who plagiarizes (From dictionary.com: noun ~ the unauthorized use or close imitation of the language and thoughts of another author and the representation of them as one's own original work) work ~ whether from an outside source or from another ASL student (past or present) ~ will receive a failing grade for the assignment. This clearly supports the process of promoting academic integrity at TRCC. Academic Dishonesty is not tolerated thus, I will follow the process which is outlined in the TRCC Student Handbook for anyone who is suspected of such.

MISCELLANEOUS EXPECTATIONS AND INFORMATION:

Class begins promptly at 3:30 p.m. and procedures will not be delayed to accommodate late comers. Arriving late or leaving early by fifteen (15) minutes will result in that meeting date's participation grade being lowered. Consistent practice using sign is of utmost importance if students are to master the language. Therefore, students will be expected to spend time outside of class practicing the language of native signers. Any public library will have or be able to get through inter-library loan videos and books on ASL. You will also be notified of any events where you can have the opportunity to use your new language skills.

EARLY WARNING:

If you are having ANY difficulty, for any reason, please see me as early as possible to discuss ways of assisting you to be successful in this class. I will notify you by the midterm (3/14/12) if your grade is lower than average (C 74-76%).

CANCELLATION (by Instructor):

If I need to cancel a class, I will contact each student via email or phone. Unless the college cancels classes (ie due to weather), expect to meet for class. FOR INFORMATION REGARDING SCHOOL CANCELLATIONS DUE TO WEATHER CALL TRCC AT 860-886-0177

WHAT YOU CAN EXPECT FROM ME:

- To arrive to class on time
- To be available **by appointment** for discussion on concerns or clarifications of material. Discussion can be in person, on the phone, or via Skype. See my contact sheet.
NOTE: I teach another Level I class at Quinebaug Valley Community College on Monday evenings and am therefore never available on a Monday.
- To be prepared;
- To hold class for the entire class period;
- To return corrected work, as often as possible, within one week after it is collected;
- To give you my best effort in sharing what I know about American Sign Language and the Deaf; and
- To work with each individual by providing guidance to successfully complete this course.



WITHDRAWAL FROM CLASS: (as found in the Registration Guidelines)

Course withdrawals are accepted through April 13, 2012. Specific dates are posted in the academic calendar and withdrawal forms are available online or at the Registrar's office. The withdrawal does not have to be signed by the instructor but it is strongly recommended that you speak with your instructor before withdrawing. If you are receiving financial aid you must contact their office for approval before withdrawing. If necessary, you can withdraw over the phone by calling the Registrar's Office at 860-892-5756. Not attending class does not equal withdrawal from said class. **If you do not officially withdraw, you will receive a grade of "F" on your transcript.**


Students receiving Financial Aid or Veteran's Benefits must contact those offices prior to withdrawing from classes.

DISABILITIES STATEMENT:

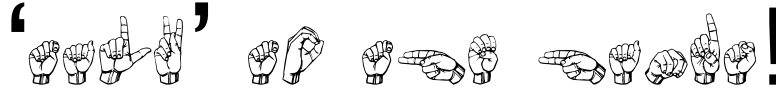
This course complies with the guidelines set forth under the ADA. Should you need assistance and/or accommodations please privately notify me and provide me with the necessary paperwork during the first two classes. I am unable to make accommodations without the official documentation. If you have not already done so, please be sure to notify Student Development and Services, which coordinates services to students with disabilities, or one of the following individuals: Students with learning disabilities or attention deficit disorder should contact Chris Scarborough at 860.892.5751 or by email at cscarborough@trcc.commnet.edu. Students with a physical, medical or psychiatric disability contact Kathleen Gray at 860.885.2328 or by email at kgray@trcc.commnet.edu or Matt Liscum at 860.383.5240 or by email at mliscum@trcc.commnet.edu.

• IMPORTANT DATES

- | | |
|--------------------------------|--|
| • Monday, January 23, 2012 | 1 st day of ASL I classes. |
| • Wednesday, January 25, 2012 | Instructor signature needed to add classes. |
| • Wednesday, February 1, 2012 | Last day for add/drop & partial tuition refund |
| • Wednesday, February 15, 2012 | Last day to select audit option |
| • Monday, February 20, 2012 | Presidents' Day - NO Classes! |
| • March 18-25, 2012 | Spring Recess ~ college closed |
| • Thursday, April 5, 2012 | Last day to select Pass/Fail option |
| • Monday, May 7, 2012 | Last day to withdraw from classes |
| • Monday, May 14, 2012 | Final exam - Part II: ASL I (P.Bell) |

DATE 	Lesson	Quiz	Essay	TV Logs	Mid- term	Finals	Presentation	Home- work Assign- ments
1/23 (M)	ABC & Concepts							
1/25 (W)	ABC & Concepts							See
1/30 (M)	Unit 1	Q 1						Agenda
2/1 (W)	Unit 2							
2/6 (M)	Unit 2							
2/8 (W)	Unit 3							
2/13 (M)	Unit 3							
2/15 (W)	Unit 4	Q 2						
2/20 (M)	NO CLASS							
2/22 (W)	Unit 5							
2/27 (M)	Unit 6	Q 3						
2/29 (W)	Unit 6							
3/5 (M)	Numbers							
3/7 (W)	Numbers							
3/12 (M)	Review							
3/14 (W)	Midterm				Yes			
3/19 & 21	NO CLASS							
3/26 (M)	Unit 7							
3/28 (W)	Unit 7							
4/2 (M)	Unit 8							
4/4 (W)	Unit 8							
4/9 (M)	Unit 9	Q 4						
4/11 (W)	Unit 9		Yes					
4/16 (M)	Unit 10							
4/18 (W)	Unit 10							
4/23 (M)	Unit 11	Q 5						
4/25 (W)	Unit 12			Yes				
4/30 (M)	MFDD & TV disc.	Q 6				Card		
5/2 (W)	Deaf Awareness							
5/7 (M)	Presentations						Yes	
5/9 (W)	Presentations						Yes	
5/14 (M)	Final					Yes		





LEARN and have FUN!
Experience a great language!
Let your fingers do the talking!
‘Talk’ to the hands!



THREE RIVERS COMMUNITY COLLEGE
NORWICH, CT

AMERICAN SIGN LANGUAGE I: ASL* K 101 TR1

INSTRUCTOR: Paula Rosenberg Bell, M.Ed.

SPRING SESSION: 2012 CRN:11634

Room D 224; 3:30-4:45, Mondays/Wednesdays 1/23/12-5/14/12

DATES

LESSON

AGENDA



1/23 (M)
1/25 (W)

ABCs

Deaf Awareness Survey; Introductions;
'Housekeeping'; Introductions to the course
Requirements; "Deaf Donald"; Dactylology;
ABCs; Name signs; Nonverbal communication

ASSIGNMENT: Develop name sign (Due:1/30);
prepare one (3-5 letters) word to fingerspell for
the quiz (Due: 1/30).

1/30 (M)

Unit 1

Review; Quiz 1 ~ Fingerspelling; Name sign;
Gender; Referent; Simple Sentence Structure;
Questions; Introduce Unit 1; Drill

ASSIGNMENT: Read/View/Practice Unit 1
vocabulary (Due: 2/1)

2/1 (W)
2/6 (M)

Unit 2

Review vocab/concepts; Answering Questions;
Negating/Confirming; Introduce Unit 2; Drill;
Facial Charades;

ASSIGNMENT: Read/View/Practice Unit 2
vocabulary (Due: 2/8)

2/8 (W)
2/13 (M)

Unit 3

Review vocab/concepts; manners; intro
'directional verbs'; verbs indicating
subject-object; Introduce Unit 3; Drill;
Fingerspelling Relay

ASSIGNMENT: Read/View/Practice Unit 3;
prepare one (3-words) sentence for Quiz 2
(Due: 2/15)



2/15 (W)	Unit 4	<p>Select MFDD book/movie; Review vocab/ concepts; Quiz 2; Introduce 'describing'; initialized signs; topic markers; Introduce Unit 4 vocabulary; Drill</p> <p>ASSIGNMENT: Read/View/Practice Unit 4; Review previous vocabulary (Due: 2/22).</p>
2/20 (M)		Presidents' Day ~ No classes.
2/22 (W)	Unit 5	<p>Review vocabulary; Introduce noun-verb pairs; attention; 'don't mind' & 'for me'; Introduce Unit 5; Drill</p> <p>ASSIGNMENT: Review Units 1-5 Quiz 3; Prepare one sentence with topic indicator (clearly presented!) for quiz on vocab/concepts Units 1-5. (Due: 2/27).</p>
2/27 (M) 2/29 (W)	Unit 6	<p>Review vocab/concepts; Quiz 3; Introduce negative incorporation; modals; Introduce Unit 6 vocabulary; Play 'Beginning With the Ending'.</p> <p>ASSIGNMENT: Read/View/Practice Unit 6; Review previous lessons for SIGNO; Complete SIGNO sheets (Due: 3/5)</p>
		<p>NOTE: Begin to prepare for the midterm (ABCs, Numbers, Units 1-6); Prepare one (3-5 letters) word AND one (3-5 words) ASL grammatically correct sentence for midterm (Due: 3/14)</p>
3/5 (M) 3/7 (W)	Numbers	<p>Review vocab/concepts; SIGNO; Introduce numbers/vocab.; Number Rules; Drill; Game</p> <p>ASSIGNMENT: Read/View/Practice; Review all previous lessons for Signing Bee (Due 3/12)</p>



3/12 (M)	Review	Review numbers/concepts; Signing Bee; review for midterm
		ASSIGNMENT: prepare for the midterm (ABCs, Numbers, Units 1–6); Prepare one (3–5 letters) word AND one (3–5 words) ASL grammatically correct sentence for midterm (Due: 3/14)
3/14 (W)	Midterm	Midterm
		ASSIGNMENT: Prepare an 8–10 word sentence for ‘Gossip’ (Due: 3/26)
3/19, 3/21	NO CLASS	Spring Recess ~ College Closed
3/26 (M)	Unit 7	Play ‘Gossip’; Introduce classifiers; plurals; introduce Unit 7; “Reporter”; Drill
3/28 (W)		
		ASSIGNMENT: Read/View/Practice Unit 7; Prepare a description of an object ~ the class will guess the object. <u>DO NOT USE THE NAME OF THE OBJECT IN YOUR DESCRIPTION!!</u> Bring the object or a picture to show the class after the guessing is completed. (Due: 4/2)
4/2 (M)	Unit 8	Review vocab/concepts; “Reporter” (reporting); ‘Guess the Object’; time; ‘finish’; Introduce Unit 8; Drill
4/4 (W)		
		ASSIGNMENT: Read/View/Practice Unit 8; review concepts/vocab. for Q4 (4/9) (You will be viewing a signed story.) (Due: 4/9)
		ASSIGNMENT: Essay: compare/contrast two of the articles posted on Blackboard. Review the explanation paper given on 1/23–25. (Due: 4/11)



4/9 (M)
4/11 (W)

Unit 9

Review vocab/concepts; Q4 ~ Story Quiz;
'whispering' in sign; introduce Unit 9; discuss
essays; drill; "Famous People"

ASSIGNMENT: Read/View/Practice Unit 9 (Due:
4/16)

ASSIGNMENT: Begin preparing a short (no
more than 3 mins but no less than 1 min)
poem, joke, story, song, etc. for 5/7 & 9.
You may work alone, in pairs, or in a triad. See
the instructor for length of time.

4/16 (M)
4/18 (W)

Unit 10

Review vocab/concepts; Loan signs.
Introduce Unit 10; drill; Opposite Relay

ASSIGNMENT Part 1: Read/View/Practice Unit 10
Review all previous vocab/concepts for Quiz 5
(4/23); Prepare 2 connected sentences (3-5
words per/1 fingerspelled word optional) for the
quiz (Due: 4/23)

ASSIGNMENT Part 2: Prepare a three - six
sentence description of an event for the class to
guess. DO NOT USE THE NAME OF THE EVENT IN
YOUR DESCRIPTION!! Bring a visual of the event
to show the class after the guessing is
completed. (Due: 4/25).

ASSIGNMENT: Complete the 3 TV viewing logs
(Due 4/25; to be discussed 4/30)

ASSIGNMENT: Continue creation of the 'Mother
Father Deaf Day' card to represent the movie you
viewed or the book you read = 1/2 of your Final
Exam grade. (Due: 4/30)

ASSIGNMENT: Continue prep. for 5/7 & 9
presentation.



4/23 (M)	Unit 11	Review vocab/concepts; Q5; Introduce Unit 11;
4/25 (W)	Unit 12	'Guess the Event'; Money Rules; Introduce Unit 12
		ASSIGNMENT: Complete the 'Mother Father Deaf Day' card to represent the movie you viewed or the book you read = 1/2 of your Final Exam grade; prepare a voiced explanation and 3-5 additional comments signed (grammatically correct) regarding your recommendation (pro or con) of the book/movie with supporting details. <u>Return materials!</u> (Due: 4/30)
		ASSIGNMENT: Continue prep. for 5/7 & 9 presentation. Prepare a list of signs needed for your presentation.
4/30 (M)	MFDD	Return materials for MFDD information; Discussion of TV viewings; share Mother Father Deaf Day cards; continue 1-1 discussion of signs needed for presentations
		ASSIGNMENT: Continue prep. for 5/7 & 9 presentation.
5/2 (W)	Deaf Awareness	Fingerspelling Quiz 6; Informational session about deafness; Catch-Up
5/7 (M)	Presentations	Presentations
5/9 (W)	Presentations	Presentations
		ASSIGNMENT: Review for final!
5/14 (M)	Final	Final; Certificates; 'Optional Vocabulary'

NOTE: Following the final exam, everyone must remain for the awarding of certificates. 'Optional Vocabulary' will be taught last.

