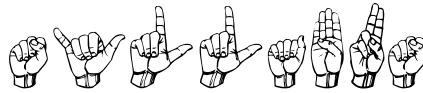


Three Rivers Community College  
Norwich–New London Turnpike  
Norwich, CT 06360



## SYLLABUS

American Sign Language I  
ASL\* K 101 TR1  
CRN: 11634  
Fall 2011  
3.0 Credits

Mondays/Wednesdays 3:30–4:45; Room D 226  
Instructor: Paula Rosenberg Bell, M.Ed.  
See Contact Sheet for More Information:  
[pbell@qvcc.commnet.edu](mailto:pbell@qvcc.commnet.edu)  
860–377–7101 (text preferred; voice accepted)

### **COURSE DESCRIPTION: ASL\* K101 AMERICAN SIGN LANGUAGE I**

- This is a first course of study of American Sign Language, the language used by the Deaf Community in the United States. ASL I introduces students to the fundamentals of ASL grammar, vocabulary, fingerspelling, numbers, and visual–gestural communication. Introduction to Deaf Culture is integrated into this beginning level course.



## GOALS & OBJECTIVES

Upon successful completion of American Sign Language I, students will be competent ~ receptively and expressively ~ in the following areas:

- Demonstrate the ability to select, produce, and use appropriate sign vocabulary for clear and accurate communication.
- Apply the appropriate grammar and syntax by using facial expression and body language to communicate in sign language effectively.
- Develop understanding of Deaf culture, differences between Deaf and Hearing cultures, and insight of the experiences of being deaf when communicating in a hearing world.

## MATERIALS:

- Required Text: **LEARNING AMERICAN SIGN LANGUAGE (2<sup>nd</sup> edition)** – Tom Humphries & Carol Padden.
- Supplemental materials will be provided by the instructor.
- Videos and supplementary materials used in class.

## VALUABLE RESOURCES:

\*The DVD which accompanies your text book!

[www.aslpro.com](http://www.aslpro.com)

[www.lifeprint.com](http://www.lifeprint.com)

[www.signingsavvy.com](http://www.signingsavvy.com)

[iTunesU @TRCC](#)

(Go to TRCC's home page, Click on 'Quick Links', Click on iTunesU, click on TRCC Students, Go to the ASL tab, Click on the chapter number you want to review. Currently, Chapters 1–9 are correctly labeled. Chapters 10 and 11 are AWOL, and Chapter 12 is labeled as #10. This will be remedied by the time you need Chapters 10–12!)

## PROCEDURE:

1. Classroom instruction of language component.
2. Modeling of target language.
3. Practice using target language in and outside of class. (See Valuable Resources)
4. Interaction with native users of target language: a list of events will be provided.
5. In-class discussions, activities and presentations.
6. Off campus activities with written papers.
7. Quizzes & Exams



## REQUIREMENTS:

- HAVE FUN!! This is a great language to learn!
- Participate.
- Be prepared to learn.
- Complete all assignments ~ they are given to support your learning. All assignments and their due dates are in the agenda. Written assignments may be handed in early. Assignments, if late, will be graded **two full letter grades** lower for each class date the assignment is late. If it was worthy of an A, it will become a C.

## METHOD OF EVALUATION

Students gain proficiency / mastery at different rates. Each student is capable of achieving proficiency / mastery in ASL and will be given every opportunity to do so. All assessments are cumulative. I use a point system for grading:

4	A (94 -100)	4.00 QP
4 -	A - (90 - 93)	3.67 QP
3+	B+ (87 - 89)	3.33 QP
3	B (84 - 86)	3.00 QP
3 -	B- (80 - 83)	2.67 QP
2 +	C+ (77 - 79)	2.33 QP
2	C (74 - 76)	2.00 QP
2 -	C- (70 - 73)	1.67 QP
1+	D+ (67 - 69)	1.33 QP
1	D (64 - 67)	1.00 QP
1-	D- (60 - 63)	.67 QP
0	F (0 - 59)	.00 QP
NA	Not Applicable	
	Participation/ Attendance	30%
	Quizzes	20%
	Midterm	10%
	Final (2 parts)	20%
	TV Logs	5%
	Essay	5%
	Presentation	10%



- **Classroom Participation – 30%**

In order to learn American Sign Language, one MUST participate in using it. Attendance will be recorded. I recognize that there are extenuating circumstances where one must miss a class. Please notify me in advance of class if you are going to be absent. (See my contact card for information.) You will be allowed two (2) unexcused absences. Additional absences will be recorded as a zero (0). Leaving class early by 15 minutes (or more) or arriving late by 15 minutes (or more) will result in a lowered participation grade for that class. Class participation will be graded on 5 points at every class meeting as follows: Preparation, Timeliness, Class Interaction, Focus\*, Responses/Volunteerism. \* If you are using your cell phone or the like, you will lose participation points and may be asked to leave the classroom.

- **Exams – Midterm: 10% (10/19/11); Final: 20% (15% Flash Mob: Holiday Songs Date to be Determined; 5% Interactive (Cultural Event) on 12/14/11)**

There will be two exams. The midterm will include the evaluation of expressive/receptive skills as well as a written component; a quarter of the final will be an interactive one where the students demonstrate their knowledge of American Sign Language and Deaf Culture (Cultural Event ~ CE~ held the last class, 12/14). The other three-quarters of the final requires students to participate in the selection, glossing, learning, and presentation of holiday songs as an ASL Flash Mob ~ FM~ (dates to be determined). There will be no make-up for the FM or CE. The midterm must be made up within one week unless I have certification of hospitalization for you or a member of your family or a death in the immediate family.

- **Quizzes – 20% (8)**

Quizzes will be used to assess your progress and to show you where you need to focus your energy. There will be 8 quizzes. Three of the quizzes will require that an expressive component be recorded and handed in on a USB drive or DVD. These will be viewed by both ASL I instructors, graded separately, with the two ‘scores’ averaged. You will receive an information sheet prior to each of these quizzes. Expressive quizzes will cover Units 1 – 4, 5 – 8, and 9 – 12.

- **Logs – 5% (Due: 11/30/11)**

Each student will be required to watch three television shows. Each show must be viewed for at least 30 minutes including commercials. With the exception of the news, each must be a show that you are **not** familiar with. Neither volume nor closed-captions may be used. (News, drama, comedy only.... **NO sports events, cartoons, animated shows, claymation, ‘how to’ shows, game shows!**) After watching the show, a paper is to be written describing your experience. Each paper will be (one) 1 page typed or neatly written using the following guidelines: (See the packet TV Viewing Log)

- ❖ Each paper is a representation of YOUR thoughts. YOUR feelings or beliefs, YOUR



impressions, YOUR agreements / disagreements and why. It is NOT a summary of the show! It doesn't matter to me what the show was about ~ I want to know what you were feeling/experiencing during the activity. Points will be taken off for not following the directions for this assignment. The purpose of the assignment is not to critique or summarize a TV program but rather to experience what it is like not to hear. It is an empathy builder.

- ❖ Reflect on how this experience / activity has impacted you?
- ❖ How will you use this information?
- ❖ Does this information/activity change the way that you think? How and why?

### • **Essay - 5% (Due 11/16/11)**

A packet of articles will be handed out and made available on Blackboard. You are to use these articles to assist with writing an essay. There are two categories of articles. Some are serious documentations of particular topics and others are less serious and often perceptions or experiences from Deaf individuals. Pick one article from each category to compare and contrast for the essay. Points will be taken off for spelling errors and grammatical mistakes. Hint: Utilize spell check/grammar check programs.

The focus of the essay could be one of the following:

- How did this information change or impact the deaf/Deaf community?
- How do you feel this information impacts the deaf/Deaf community in the 21<sup>st</sup> century?
- How do you think the deaf/Deaf community feels about this topic?

### • **Presentation - 10% (Due 12/5/11, 12/7/11)**

Each student will be required to sign for a minimum of 1 minute/maximum of 3 minutes on a topic of their choosing. This may be done alone, with a partner, or in a triad. (See instructor for partner and triad times) There must be a visual associated with the presentation. Failure to adhere to the minimum time requirement will result in a presentation grade of zero (0).

### • **MAKE UP WORK:**

1. Missed in-class quizzes need to be scheduled with the instructor and made up within one week. Any quiz that is not made up will receive a grade of 0. Expressive quizzes for units 1-4, 5-8, and 9-12 are expected on the date listed in the syllabus/agenda/calendar. There will be no time extensions for the previously established due date. If you are absent on the day a recording is due, you will need to get the recording to me either electronically or before I flash lights indicating the start of the next class. Otherwise a zero will be recorded for that quiz grade.
2. Missed in-class activities cannot be made up due to the nature of the activities.
3. There is no make-up for the final exam (FM and/or CE); the midterm must be made up within one week.
4. This course does not offer extra credit work. A bonus question is offered on the midterm. (Anyone taking a make up midterm will not receive the bonus question.)



## • PLAGIARISM

Any student who plagiarizes (From dictionary.com: noun ~ the unauthorized use or close imitation of the language and thoughts of another author and the representation of them as one's own original work) work ~ whether from an outside source or from another ASL student (past or present) ~ will receive a failing grade for the assignment. This clearly supports the process of promoting academic integrity at TRCC. Academic Dishonesty is not tolerated thus, I will follow the process which is outlined in the TRCC Student Handbook for anyone who is suspected of such.

## • MISCELLANEOUS EXPECTATIONS AND INFORMATION:

Class begins promptly at 3:30 p.m. and procedures will not be delayed to accommodate late comers. Consistent practice using sign is of utmost importance if students are to master the language. Therefore, students will be expected to spend time outside of class practicing the language of native signers. Any public library will have or be able to get through inter-library loan videos and books on ASL. You will also be notified of any events where you can have the opportunity to use your new language skills.

## • EARLY WARNING:

If you are having ANY difficulty, for any reason, please see me as early as possible to discuss ways of assisting you to be successful in this class. I will notify you by the midterm (10/19/11) if your grade is lower than average (C 74-76%).

## • CANCELLATION (by Instructor):

If I need to cancel a class, I will contact each student via email or phone. Unless the college cancels classes (ie due to weather), expect to meet for class. FOR INFORMATION REGARDING SCHOOL CANCELLATIONS DUE TO WEATHER CALL TRCC AT 860-886-0177

## WHAT YOU CAN EXPECT FROM ME:

- To arrive to class on time
- To be available **by appointment** for discussion on concerns or clarifications of material. Discussion can be in person, on the phone, or via Skype. See my contact sheet.  
**NOTE:** I teach another Level I class at Quinebaug Valley Community College on Monday evenings and am therefore never available on a Monday.
- To be prepared;
- To hold class for the entire class period;
- To return corrected work, as often as possible, within one week after it is collected;
- To give you my best effort in sharing what I know about American Sign Language and the Deaf; and
- To work with each individual by providing guidance to successfully complete this course.



• **WITHDRAWAL FROM CLASS: (as found in the Registration Guidelines)**

Course withdrawals are accepted up until the week before classes end. Specific dates are posted in the academic calendar and withdrawal forms are available online or at the Registrar's office. The withdrawal does not have to be signed by the instructor but it is strongly recommended that you speak with your instructor before withdrawing. If you are receiving financial aid you must contact their office for approval before withdrawing. If necessary, you can withdraw over the phone by calling the Registrar's Office at 860-892-5756.

**Students receiving Financial Aid or Veteran's Benefits must contact those offices prior to withdrawing from classes.**

• **DISABILITIES STATEMENT:**


This course complies with the guidelines set forth under the ADA. Should you need assistance and/or accommodations please privately notify me and provide me with the necessary paperwork during the first two classes. I am unable to make accommodations without the official documentation. If you have not already done so, please be sure to notify Student Development and Services, which coordinates services to students with disabilities, or one of the following individuals: Students with learning disabilities or attention deficit disorder should contact Chris Scarborough at 860.892.5751 or by email at [cscarborough@trcc.commnet.edu](mailto:cscarborough@trcc.commnet.edu). Students with a physical, medical or psychiatric disability contact Kathleen Gray at 860.885.2328 or by email at [kgray@trcc.commnet.edu](mailto:kgray@trcc.commnet.edu) or Matt Liscum at 860.383.5240 or by email at [mliscum@trcc.commnet.edu](mailto:mliscum@trcc.commnet.edu).

• **IMPORTANT DATES**

- |                               |  |
|-------------------------------|--|
| • Monday August 29, 2011      | 1 <sup>st</sup> day of ASL I classes.          |
| • Saturday September 2, 2011  | Instructor signature needed to add classes.    |
| • Monday, September 5, 2011   | Labor Day - college closed.                    |
| • Thursday, September 8, 2011 | Last day for add/drop & partial tuition refund |
| • Friday, September 23, 2011  | Last day to select audit option                |
| • Monday October 10, 2011     | Columbus Day - Classes IN session!             |
| • Friday, November 4, 2011    | Last day to select Pass/Fail option            |
| • Friday November 11, 2011    | Veteran's Day - Classes NOT in session.        |
| • November 24 - 27, 2011      | Thanksgiving Recess - No classes.              |
| • December 14, 2011           | Final exam - Part II: ASL I (P.Bell)           |

NOTE: The Final Exam: ASL FLASH MOB ~ HOLIDAY SONGS will occur prior to the last day of class. The dates will be announced in both ASL I classes once the dates are known.

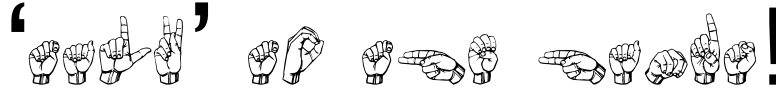


DATE 	Lesson	Q u i z	E s s a y	T V L o g s	M i d t e r m	F M	F i n a l	Presentation	Home- work Assign- ments
8/29 (M)	ABC & Concepts								
8/31 (W)	ABC & Concepts								See
9/7 (W)	Unit 1	Q 1							Agenda
9/12 (M)	Unit 2								
9/14 (W)	Unit 3								
9/19 (M)	Unit 3					Song			
9/21 (W)	Unit 4	Q 2 D							
9/26 (M)	Unit 4					FM view			
9/28 (W)	Unit 5	Q 3 D							
10/3 (M)	Unit 5					FM intent			
10/5 (W)	Unit 6								
10/10 (M)	Unit 6								
10/12 (W)	Numbers								
10/17 (M)	Review	Q 4				Gloss			
10/19 (W)	Midterm				Yes				
10/24 (M)	Unit 7								
10/26 (W)	Unit 7								
10/31 (M)	Unit 8								
11/2 (W)	Unit 8								
11/7 (M)	Unit 9	Q 5 D							
11/9 (W)	Unit 9								
11/14 (M)	Unit 10					Signs!!			
11/16 (W)	Unit 10		Yes						
11/21 (M)	Unit 11	Q 6							
11/28 (M)	Unit 12								
11/30 (W)	Deaf Awareness			Yes					
12/5 (M)	Presentations	Q 7 D						Yes	
12/7 (W)	Presentations							Yes	
12/12 (M)	Deaf Awareness	Q 8							
12/14 (W)	Final ~ Part II						Yes		

*D = DVD or USB drive to be collected on the date specified. No time extensions for these.*







**LEARN and have FUN!**  
**Experience a great language!**  
**Let your fingers do the talking!**  
**‘Talk’ to the hands!**



THREE RIVERS COMMUNITY COLLEGE  
NORWICH, CT

**AMERICAN SIGN LANGUAGE I: ASL\* K 101 T1**

INSTRUCTOR: Paula Rosenberg Bell, M.Ed.

FALL SESSION: 2011 CRN:11634

Room D 226; 3:30-4:45, Mondays/Wednesdays 8/29/11-12/14/11

DATES

LESSON

AGENDA



8/29 (M)  
8/31 (W)

ABCs

Deaf Awareness Survey; Introductions;  
'Housekeeping'; Introductions to the course  
Requirements; "Deaf Donald"; Dactylology;  
ABCs; Name signs; Nonverbal communication

**ASSIGNMENT:** Develop name sign (Due:9/7);  
prepare one (3–5 letters) word to fingerspell for  
the quiz (Due: 9/7).

9/7 (W)  
9/12 (M)

Unit 1  
Unit 2

Review; Quiz 1 ~ Fingerspelling; Gender;  
Referent; Questions, Negating,  
Confirming; Simple Sentence Structure;  
Introduce Units 1 & 2; Drill; Assign FM teams  
(9/7)

**ASSIGNMENT:** Read/View/Practice Units 1 & 2  
vocabulary (Due: 9/14)

**ASSIGNMENT:** Team suggestions for Holiday  
Songs (Due: 9/19)

9/14 (W)  
9/19 (M)

Unit 3

Review vocab/concepts; intro 'directional verbs';  
Unit 3 ; Drill; Facial Charades; Fingerspelling  
Relay; collect Holiday Song lists (9/19)

**ASSIGNMENT:** Read/View/Practice Unit 3; Review  
information through Unit 3 for Quiz 2 (written)  
(Due: 9/21).

**ASSIGNMENT:** View examples of Flash Mob  
performances (provided). Select which  
performance was the most visually interesting  
and which was the least visually interesting.  
Submit your choices and reasons WHY you chose  
as you did. (Due: 9/26/11)



9/21 (W) 9/26 (M)	Unit 4	<p>Review vocab/concepts; Q2; Introduce 'describing'; initialized signs; topic markers; Introduce Unit 4 vocabulary; Drill; Vote on Holiday Song choices (9/26)</p> <p><b>ASSIGNMENT:</b> Read/View/Practice Unit 4; Review previous vocabulary; record sentences for Q3 (Due: 10/3)</p>
9/28 (W) 10/3 (M)	Unit 5	<p>Review vocabulary; "Reporter"; Introduce noun-verb pairs; Introduce Unit 5; Drill; collect USB drive or DVD of Q2 (10/3)</p> <p><b>ASSIGNMENT:</b> Read/View/Practice Unit 5 (Due: 10/5).; Teams begin glossing songs, final gloss due on 10/17.</p>
10/5 (W) 10/10 (M)	Unit 6	<p>Review vocab/concepts; Introduce negative incorporation; modals; Introduce Unit 6 vocabulary; Play 'Beginning With the Ending'; Check glossing.</p> <p><b>ASSIGNMENT:</b> Read/View/Practice Unit 6; Review previous lessons for SIGNO; Complete SignO sheets ~ instructor given (Due: 10/19); Continue glossing songs, gloss due on 10/17</p>
		<p><b>NOTE:</b> Begin to prepare for the midterm (ABCs, Numbers, Units 1-6); Prepare one (3-5 letters) word <b>AND</b> one (3-5 words) ASL grammatically correct sentence for midterm (Due: 10/19)</p>
10/12 (W)	Numbers	<p>Review vocab/concepts; Introduce numbers/vocab.; Check glossing</p> <p><b>ASSIGNMENT:</b> Read/View/Practice; Practice numbers/concepts for Q4 (Due: 10/17); Review all previous lessons for Signing Bee; SignO (Due: 10/17); Cont. glossing songs, gloss due 10/17.</p>
10/17 (M)	Review	<p>Review numbers/concepts; Q4; Signing Bee; SignO; review for midterm; collect glossed songs.</p> <p><b>ASSIGNMENT:</b> prepare for the midterm (ABCs, Numbers, Units 1-6); Prepare one (3-5 letters) word <b>AND</b> one (3-5 words) ASL grammatically correct sentence for midterm (Due: 10/19)</p>



10/19 (W)	Midterm	Midterm <b>ASSIGNMENT:</b> Prepare an 8–10 word sentence for ‘Gossip’ (Due: 10/24)
10/24 (M) 10/26 (W)	Unit 7	Play ‘Gossip’; Introduce classifiers; introduce Unit 7; Drill; Begin instruction of glossed songs. <b>ASSIGNMENT:</b> Read/View/Practice Unit 7; Prepare a description of an object ~ the class will guess the object. <u>DO NOT USE THE NAME OF THE OBJECT IN YOUR DESCRIPTION!!</u> Bring the object or a picture to show the class after the guessing is completed. (Due: 10/31); Practice song vocab.
10/31 (M) 11/2 (W)	Unit 8	Review vocab/concepts; ‘Guess the Object’; Halloween vocab; Introduce Unit 8; Drill <b>ASSIGNMENT:</b> Read/View/Practice Unit 8; record sentences for Q5 (Due: 11/7)
11/7 (M) 11/9 (W)	Unit 9	Review vocab/concepts; collect USB drive or DVD of Q5 (11/7); introduce Unit 9; drill; “Famous People”; Continue song intro/drill. <b>ASSIGNMENT:</b> Read/View/Practice Unit 9 (Due: 11/14); Practice songs (signs must be known by 11/14).  <b>ASSIGNMENT:</b> Write an essay that will compare and contrast two articles. (See list of articles.) (Due: 11/16)  <b>ASSIGNMENT:</b> Begin preparing a short (no more than 3 mins but no less than 1 min) poem, joke, story, song, etc. for 12/5 & 7. You may work alone, in pairs, or in a triad. See the instructor for length of time.
11/14 (M) 11/16 (W)	Unit 10	Review vocab/concepts; Loan signs. Introduce Unit 10; drill; Opposite Relay <b>ASSIGNMENT:</b> Read/View/Practice Unit 10 <b>ASSIGNMENT:</b> Prepare a three – six sentence description of an event for the class to guess. <u>DO NOT USE THE NAME OF THE EVENT IN YOUR DESCRIPTION!!</u> Bring a visual of the event



to show the class after the guessing is completed. (Due: 11/21).

**ASSIGNMENT:** Continue prep. for 12/5 & 7 presentation; Review information from Unit 7 through Unit 10 for Quiz 6 (written); Continue Flash Mob song practice.

11/21 (M)           Unit 11  
11/28 (M)           Unit 12

Review vocab/concepts; Introduce Unit 11; 'Guess the Event'; Money Rules; Introduce Unit 12

**NO CLASS: WED. 11/23!!**

**ASSIGNMENT:** Complete the 3 TV viewing logs (to be discussed 11/30); review Units 11/12.

**ASSIGNMENT:** Continue prep. for 12/5 & 7 presentation; Continue Flash Mob song practice.

11/30 (W)           Deaf Awareness  
                          Part 1

Discussion of TV viewings; informational session about deafness (part 1)

**ASSIGNMENT:** Record sentences for Q7 (Due: 12/5); Continue prep. for 12/5 & 7 presentation; Continue Flash Mob song practice.

12/5 (M)           Presentations

Collect USB drives/DVDs of Q7; Presentations

12/7 (W)           Presentations

Presentations

**ASSIGNMENT:** Review for final!

12/12 (M)           Deaf Awareness  
                          Part 2

Continued from 11/30; Q8 ~ Story Quiz

12/14 (W)           Final (Part 2) ~ Cultural  
                          Event (Interactive)

Interactive portion of the Final; Certificates; Holiday Vocab; 'Optional Vocabulary'

**NOTE: Following the final exam, everyone must remain for the awarding of certificates. 'Optional Vocabulary' will be taught last.**

