

Three Rivers Community College
Norwich, CT 06360



SYLLABUS

American Sign Language II

ASL* K102-T1

CRN: 32716

Fall 2016 (8/29/16-12/22/16)

Mondays 6-8:45 PM; Room D226

Instructor: Nate Wheeler, M.S.

Department: Humanities

Office Hours: prior to class (5:00-5:45 PM) or by appointment
(see end of syllabus for contact information)

3.0 Credits

ASL* K102-T1 AMERICAN SIGN LANGUAGE II

- . This course is a continuation of the study of American Sign Language, the language used by the Deaf Community in the United States. ASL II is an interactive course which focuses on expanding the students' ability to communicate in American Sign Language through classroom instruction and participation as well as out of class readings, practice, and required visitations. The instructional approach will be holistic ~ exploring all aspects of the language - mechanics, culture, environmental concerns, and interpreting.



GOALS & OBJECTIVES

Upon successful completion of ASL II, students will be competent ~ receptively and expressively ~ in the following areas:

- Demonstrate the ability to select, produce, and use appropriate sign vocabulary for clear and accurate communication.
- Apply the appropriate grammar and syntax by using facial expression and body language to communicate in sign language effectively.
- Further develop understanding of Deaf culture, differences between Deaf and Hearing cultures, and insight of the experiences of being deaf when communicating in a hearing world.

COURSE RESOURCES:

- **MASTER ASL! LEVEL ONE** by Jason E. Zinza (Required)* ISBN #: 1-881133-20-6
- **MASTER ASL! FINGERSPELLING, NUMBERS, AND GLOSSING** by Jason E. Zinza (Required)* ISBN#: 978-1-881133-21-6
- Supplemental materials will be provided by the instructor
- Videos and supplementary materials used in class.
- ASL chart (available in TRCC Bookstore) ~ recommended

* This semester, we will do Units 4-6 in **MASTER ASL! LEVEL ONE** by Jason E. Zinza. In addition, we will use **MASTER ASL! FINGERSPELLING, NUMBERS, AND GLOSSING** by Jason E. Zinza. As with the main text, we will do Units 4-6 Fingerspelling, Units 4-6 Numbers, and Units 4-6 Glossing. This follows the same sequence as UCONN's Sign Language program.

VALUABLE RESOURCES:

*The DVD which accompanies your text book!

www.aslpro.com

www.lifeprint.com

www.signingsavvy.com

<http://aslbrowser.commtechlab.msu.edu/browser.htm>

<http://www.handspeak.com>

PROCEDURE:

1. Classroom instruction of language component.
2. Modeling of target language.
3. Practice using target language in and outside of class.
4. Interaction with native users of target language.
5. In-class discussions, activities and presentations.
6. Off campus activities with written responses/papers.
7. Quizzes & Exams
8. Homework Assignments



REQUIREMENTS:

- HAVE FUN!! Of course since this is Level II, you already know this is a great language to learn!
- Participate.
- Be prepared to learn.
- Complete all assignments ~ they are given to support your learning. All assignments and their due dates are in the agenda. Written assignments may be handed in early but if late will receive a zero.
- Last page of syllabus (acknowledgement and receipt of syllabus) has been signed and given to Paula/Nate by the end of the first class meeting) NOTE: This counts as your first quiz grade; not signing = a zero (0).

METHOD OF EVALUATION

Students gain proficiency / mastery at different rates. Each student is capable of achieving proficiency / mastery in ASL and will be given every opportunity to do so. All assessments are weighted and cumulative (based on 100 points). All grades will be posted in BlackBoard (Grading Center) per each assessment. There will be a running total so you'll know exactly what your grade is at any time. Grades will be entered within one week of an assignment's due date.

94 -100	A
90 - 93	A-
87 - 89	B+
84 - 86	B
80 - 83	B-
77 - 79	C+
74 - 76	C
70 - 73	C-
67 - 69	D+
64 - 67	D
60 - 63	D-
0 - 59	F
Participation/Attendance	10%
Quizzes	5%
Outside Visits to Deaf Functions	15%
Midterm (10%)/Final ~ 2 Parts (20%)	30%
Postings	15%
Essay	5%
Presentation	15%
Homework	5%



•Classroom Participation – 10%

In order to learn American Sign Language, one MUST participate in using it. Attendance will be recorded. We recognize that there are extenuating circumstances where one must miss a class. Please notify both of us in advance of class if you are going to be absent. (See our contact information on the last page of the syllabus.) You will be allowed one (1) “free” absence that will not impact your grade. Additional absences will be recorded as a zero (0). Leaving class early by 15 minutes (or more) or arriving late by 15 minutes (or more) will result in a lowered participation grade for that class. Class participation will be graded on 100 points at every class meeting as follows: Preparation (this includes all homework/assignment completion), Timeliness, Class Interaction, Focus*, Responses/Volunteerism. * If you are using your cell phone or the like, you will lose participation points and may be asked to leave the classroom.

•Exams– Midterm 10% Final 20% (2 Parts)

There will be two exams. The midterm will be small group ‘Lesson’ which will include the evaluation of expressive/receptive skills as well as a written component (See Midterm Exam ‘Lesson’ handout). The final is in two parts: half of the final (the second half) will be an interactive one where the students demonstrate their knowledge of American Sign Language and Deaf Culture. The first half of the final requires students to create a piece of art which visually connects to the book he/she read. This visual will be shared with the class with a 5 minute grammatically correct signed description of the relationship of the visual to the book. The connection should be obvious. **NO TIME EXTENSIONS for Part 1.** There will be **no make-up for the interactive portion of the final (Part 2).** The midterm must be made up within one week unless we have certification of hospitalization for you or a member of your family or a death in the immediate family.

•Quizzes – 5% (6 quizzes – dates on assignment page)

Quizzes will be used to assess your progress and to show you where you need to focus your energy. There will be 6 quizzes (lowest grade will be dropped; **Q1 cannot/will not be dropped**). You are signing for your classmates unless otherwise noted.

•Postings– 15% (Due: Last posting no later than class before final)

•Presentations– 15%

•Essay – 5% (See Digication)

•Digication ~ All students are required to maintain an online learning portfolio in Digication that uses the college template.

As a student you will maintain an online learning portfolio using a college–designed template in Digication. Through this electronic tool you will have the opportunity to monitor your own growth in college–wide learning. It may even help you determine a major that is best suited to you. You will be able to keep and maintain your learning portfolio after graduation. A Three Rivers General Education Assessment Team will select and review random works to improve the college experience for all. If your work is selected and



reviewed for assessment purposes, it will remain anonymous and private. Digication provides a “place” where you will connect your learning from the classroom, college, and life in general. Sometimes when you review all of the work you have done and think about it, you end up learning something different and perhaps unexpected. Please review your course outlines to determine what assignments* to upload into the TRCC Digication template and please post your own choices, as well. Have fun in learning!

* ASL II Recommendation: Upload your Essay

The Learning Portfolio (Digication)

Login Address: <https://digication.ct.edu>

How-to Documents, Tutorials & Animations

Login to Digication [Document](#) (2 pp) [Show Me](#) (:21)

Starting Portfolio with College Template [Document](#) (4 pp) [Show Me](#) (1:17)

Complete Gen Ed Instructions for Digication [Document](#) (17 pp)

Text Only [Document](#) (2 pp)

Steps to Create and Submit Your Portfolio

1. Upload Your Assignment to the Portfolio [Document](#) (pp) [Show Me](#) (1:30)

2. Create a General Education Portfolio [Document](#) (2 pp)

3. Upload Your Assignment to Your General Education e-Portfolio [Document](#) (4 pp)

4. Submit Your e-Portfolio for Review [Document](#) (5 pp)

5. Verify Your Submission [Document](#) (3 pp)

•Outside Visits to Deaf Functions (with papers –15%)

•Homework – 5%

All assignments are posted in more than one location in the syllabus. Your ‘ungraded’ homework (reading the text, practice activities) will be part of the your class participation grade. There will be five graded homework assignments that will be either from your text or workbook (**MASTER ASL! LEVEL 1** or **MASTER ASL! FINGERSPELLING, NUMBERS, AND GLOSSING**). Graded homework will be listed as HW 1, HW 2, etc.

MAKE UP WORK:

1. All assignments are due on or before the date posted ~ **no time extensions**.
2. Missed quizzes need to be scheduled with Paula/Nate and made up within one week. Any quiz that is not made up will receive a grade of 0. It is the responsibility of the student to make the arrangements.
3. Missed in-class activities cannot be made up due to the nature of the activities.
4. There is no make-up for the final exam; the midterm must be made up within one week.
5. This course does not offer extra credit work. A bonus question is offered on the midterm. (Anyone taking a make-up midterm will not receive the bonus question.)

MISCELLANEOUS EXPECTATIONS AND INFORMATION:

Class begins promptly at the scheduled time and procedures will not be delayed to accommodate late comers. Consistent practice using sign is of utmost importance if students are to master the language. Therefore, students will be expected to spend time outside of class practicing the language of native signers which students will find helpful to view. Any public library will have or be able to get through inter-library loan videos and



books on ASL. You will also be notified of any events where you can have the opportunity to use your new language skills.

EARLY WARNING:

If you are having ANY difficulty, for any reason, please see me as early as possible to discuss ways of assisting you to be successful in this class.

CANCELLATION (by Instructor): If we need to cancel a class (highly unlikely), we will contact each student via email or text. Unless the college cancels classes (ie due to weather), expect to meet for class. In the event of a college closing, we will post the makeup assignment on Blackboard.

WEATHER CLOSINGS (as found in the Student Handbook)

“Weather Related 860.886.0177 – Press 1 for College Closing Announcement

WWW.TRCC.COMMNET.EDU – Announcement posted on main page

Cancellation of classes due to weather will be available by 6:30am for daytime classes and by 3pm for evening classes starting at 5pm or later. If the off-campus site cancels day and evening services, then classes at that site will not be held. Information will be broadcasted on the following TV stations: Channel 3 – WFSB Hartford, Channel 4, WVIT 30 – NBC Connecticut News 30 and Channel 8 – WTNH New Haven, and the following Radio stations; WSUB/Q105 (Groton/New London), WADK (Westerly), WDRC (Hartford), WTIC/WRCH/WXMX (Hartford), WINY (Putnam), WILI (Willimantic) & WICH/WCTY/WNLC/WKNL (Norwich/New London).

Students can also enroll in the myCommNet Alert system, a notification system that delivers information in the event of an emergency through text messaging over cellular phones, including campus-related health or safety situations and weather-related class cancellations.”

WHAT YOU CAN EXPECT FROM US:

- To arrive to class on time
- To be available **by appointment** for discussion on concerns or clarifications of material.
NOTE: Please check the times in D205 (adjunct office), last cubby on the right.
- To be prepared;
- To hold class for the entire class period;
- To return corrected work, as often as possible, within one week after it is collected;
- To give you my best effort in sharing what I know about American Sign Language, Deaf Culture, and the Deaf Community; and
- To work with each individual by providing guidance to successfully complete this course.

WITHDRAWAL FROM CLASS:

Students may drop courses up to the final drop date as specified in the academic calendar. Please refer to the **academic calendar** and to page 9 of this syllabus for specific dates. Failure to officially drop the course will result in a grade of F which will be reflected on the transcript.



DISABILITIES STATEMENT:

This course complies with the guidelines set forth under the ADA. Should you need assistance and/or accommodations please privately notify me and provide me with the necessary paperwork during the first two classes. We are unable to make accommodations without the official documentation from one of the college's Disability Service Providers. As outlined in the **Student Handbook**: "Students with disabilities who wish to request academic adjustments or other assistance are encouraged to submit a Disability Self-Disclosure Form, provide disability documentation, and meet with the appropriate Disabilities Service Provider to discuss individual needs. When possible, this process should be completed well before classes begin. Please contact the Counseling and Advising Office for more information."

PLAGIARISM:

In order to support the process of promoting academic integrity at Three Rivers, any student who plagiarizes work from an outside source or from another student in the class will receive a failing grade for the assignment. We will also follow the process, which is outlined in the Student handbook for anyone who is suspected of Academic dishonesty.

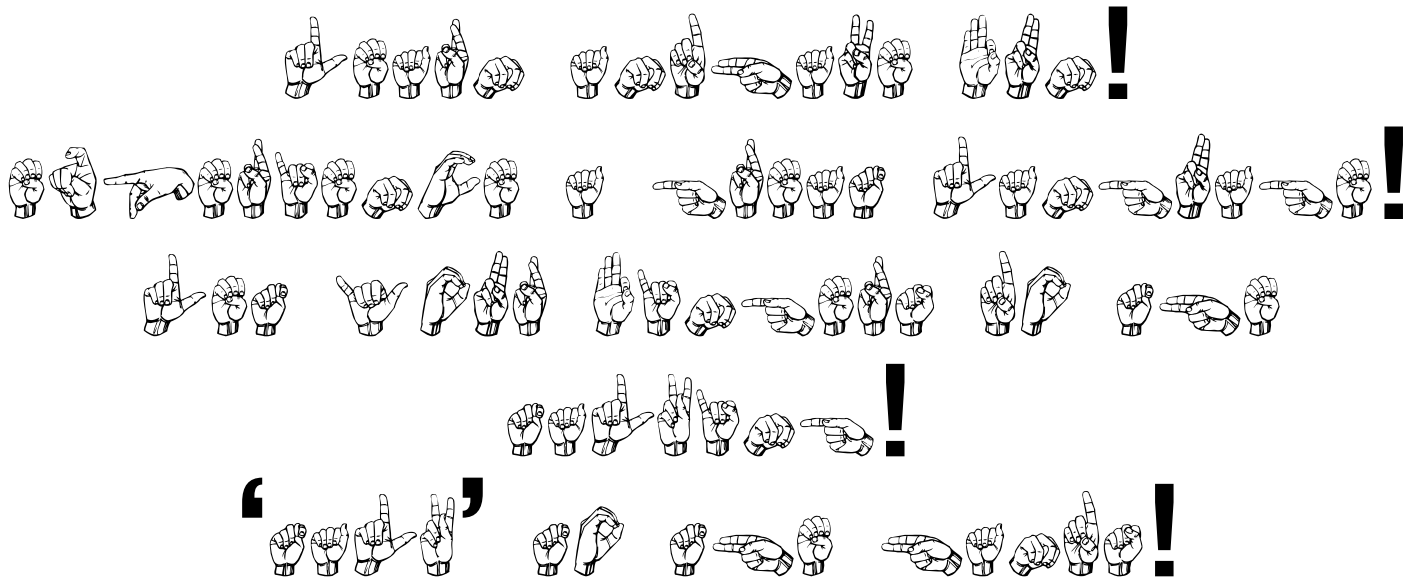
ACADEMIC INTEGRITY (as found in the Student Handbook)

"The effective operation of any organization is dependent on the honesty and goodwill of its members. In an organization devoted to the pursuit of knowledge, acting with integrity is essential to effective teaching and learning. Furthermore, academic dishonesty erodes the legitimacy of every degree awarded by the College. To emphasize the importance of academic integrity, Three Rivers Community College adheres to the following policy in addition to the Student Discipline Policy, sections 2:10 and 3:1-10, as provided by the Board of Trustees of Connecticut Community Colleges. Since collaboration is central to the learning community, Three Rivers wishes to emphasize that this policy is not intended to discourage collaboration when appropriate, approved, and disclosed.
General Definition of Academic Dishonesty

Academic Dishonesty shall in general mean conduct which has as its intent or effect the false representation of a student's academic performance, including but not limited to (a) cheating on an examination, (b) collaborating with others in work to be presented, contrary to the stated College Policies rules of the course, (c) plagiarizing, including the submission of others' ideas or papers (whether purchased, borrowed, or otherwise obtained) as one's own, (d) stealing or having unauthorized access to examination or course materials, (e) falsifying records of laboratory or other data, (f) submitting, if contrary to the rules of a course, work previously presented in another course, and (g) knowingly and intentionally assisting another student in any of the above, including assistance in an arrangement whereby any work, classroom performance, examination or other activity is submitted or performed by a person other than the student under whose name the work is submitted or performed.

Academic integrity is essential to a useful education. Failure to act with academic integrity severely limits a person's ability to succeed in the classroom and beyond. Furthermore, academic dishonesty erodes the legitimacy of every degree awarded by the College. In this class and in the course of your academic career, present only your own best work; clearly document the sources of the material you use from others; and act at all times with honor."






LEARN and have FUN!
Experience a great language!
Let your fingers do the talking!
‘Talk’ to the hands!



Class Calendar: Fall 2016



DATE 	Lesson	Q u i z	E s s a y	P o s t i n g s	M i d t e r m	F i n a l	L e s s o n	Presenta tion	E v e n t s	Home- work Assign- ments (Graded under HW 1-5) Due Dates:
Aug 29, 2016	Intro and Review via games	Q1								
Sept 12, 2016	Unit 4	Q2		Yes						
Sept 19, 2016	Unit 4			Yes						HW 1
Sept 26, 2016	Unit 4			Yes						HW 2
Oct 03, 2016	Unit 5	Q3		Yes						
Oct 10, 2016	Unit 5			Yes						HW 3
Oct 17, 2016	Unit 5 and time to work on the Midterm Exam "Lesson"		Yes	Yes						
Oct 24, 2016	Deaf Event TBD			Yes						
Oct 31, 2016	Midterm ~ Mini Lessons; Unit 6	Q4		Yes	Yes		Yes			HW 4
Nov 07, 2016	Unit 6	Q5		Yes						
Nov 14, 2016	Unit 6			Yes						HW 5
Nov 21, 2016	Panel: Deaf Awareness	Q6								See
Nov 28, 2016	Final Part 1: Art Piece			Yes		Yes				Agenda
Dec 05, 2016	Presentations/ Catch Up							Yes	Yes	for specific
Dec 12, 2016	Final Part 2; Certificates;					Yes				details.



IMPORTANT DATES

- Monday, Aug 29, 2016 **Classes Begin/Late Registration; add/drop begins**
- Monday, Aug 29, 2016 **First day ASL II ~ Welcome Back!**
- Monday, Sept 05, 2016 **Labor Day observed.
College closed; classes not in session.**
- Tuesday, Sept 06, 2016 **Last day for registered students to add classes**
- Sept 11, 2016 **Last day to drop classes & partial
tuition refund for 15 week classes**
- Sept 26, 2016 **Last day to select Audit Option**
- Nov 24-27 **Thanksgiving Break ~ Classes not in session**
- Nov 07, 2016 **Last Day to Select Pass/Fail Option for 15
Week Session**
- Dec 9, 2016 **Last day to withdraw from classes**
- Monday, Dec 12, 2016 **ASL II Last Class/Final Exam Part 2**



THREE RIVERS COMMUNITY COLLEGE
NORWICH, CT

AMERICAN SIGN LANGUAGE II: ASL* K 102-T1 CRN: 11635

INSTRUCTORS: Nathan Wheeler

FALL SESSION: 2016

29 August 2016

Tonight we expect to:

1. Complete the People Scavenger Hunt
2. Introductions
3. 'Housekeeping' ~ food, beverages, leaving, room set-up
4. Introductions to the course: requirements, agenda, exam (mini lesson, art project),
presentations, discussion board, outside visits, et al
5. Concept review via activities
6. ABC and Number Review via activities
7. Collect Q1: Acknowledgement and Receipt of Syllabus

Your assignment upon completion of tonight's lesson is to be ready for **next class** by completing the following:

1. Do the Units 1-3 Review in the text (pgs 115-118)/ There is nothing to be written.
2. In **MASTER ASL I** text, read Chapter 4; when you are directed to view the DVD please do so. This is background info ~ don't worry about the signs (please don't try to learn them on your own) we will be introducing all of the signs and don't want you to practice any bad habits. Please make note of any questions you have about what you've read.

Write the questions on post it notes and stick them on the board for us to answer.



12 September 2016

Tonight we expect to:

1. Do Q2
2. Drill FS/#s in the workbook (pg 18, Ex 1, Pg. 22 Ex 11, pg 84 Ex. 1 & 3)
3. Introduce Gender
4. Introduce Shoulder-Shifting
5. Introduce the Age-Spot
6. Begin introduction of Unit 4 Vocab/Concepts (pgs123-143)
7. **Eyes on ASL 8 & 9**
8. Practice Exercises A-M

Your assignment upon completion of tonight's lesson is to be ready for next class by completing the following:

1. Graded HW 1: In our text, page 125, Ex. 1 ~ Do A and C. A will be shared in class, C will be collected and graded. Due next class - **No Time Extensions!**
2. Practice and review vocab introduced last class.
3. Post and/or respond in Discussion on Blackboard (Due by next class, 5:30 PM)

I KNOW
SIGN LANGUAGE
—WHAT'S YOUR—
SUPERPOWER?



19 September 2016

Tonight we expect to:

1. Collect Graded HW 1
2. Review/discuss glossing of Ex C;
3. Continue Unit 4 Vocab/Concepts (pgs 144-159)~Error Correction, Describing
4. Practice exercised N-Z
5. Create small groups of 3-5 and receive your topic of instruction for the 'Midterm Lesson'

Your assignment upon completion of tonight's lesson is to be ready for next class by completing the following:

1. In the workbook, read Unit 4 **Glossing**, pages 141-144; Do the practice activities.
2. Graded HW 2: Ex. 2, 4, 6 (Workbook pgs. 141, 142,144. Use the worksheet provided)
3. Post and/or respond in Discussion on Blackboard (Due by next class, 5:30 PM)
4. Practice and review vocab introduced on thus far.



26 September 2016

Tonight we expect to:

1. Collect Graded HW 2
2. Review vocab/concepts introduced in U4;
3. Complete U4 vocab.
4. Play “Who Am I?”
5. Give you time to work with your small groups for your ‘Midterm Lesson’.

Your assignment upon completion of tonight’s lesson is to be ready for next class by completing the following:

1. Q3: In **MASTER ASL I** page 162, Review B in Unit 1 Review; Write answers to part B on Quiz 3 paper (provided ~ due 10/3 ~ **no time extensions**) This will count as 25% of your Q3 grade ; the second and third parts of Q3 will be done in class.

2. Prepare three grammatically correct ASL sentences about your family. You will sign these to the class. This will be 50% of your Q3 grade. The remaining 25% will be an in-class small group activity.

3. In the workbook, read/practice FS/Numbers Unit 5; Prep for Ex. 4 (page 93 ~ I will randomly select students to sign one of the sentences). This is not a separate homework grade but will be part of your participation grade.

4. In the text, pg. 175 Homework Exercise 2, A ~ we will randomly ask students to put their lists on the on the board for discussion; we will look at everyone’s lists — this is not a separate homework grade but will be part of your participation grade.

5. Post and/or respond in Discussion on Blackboard. (Due by next class, 5:30 PM)

6. Practice and review vocab introduced on thus far.

7. Read Unit 5, text ~ pgs 167-205



03 October 2016

Tonight we expect to:

1. Collect the written component for **Q3**
2. Review vocab/concepts introduced in U4;
3. Q3
4. Review homework: Students will be randomly selected to share from Workbook Ex. 4 (pg. 93) and text Homework Ex. 2A (pg. 175)
5. Begin U5 vocab. (pgs. 167-175), practice exercises A-F

Your assignments upon completion of tonight's lesson are to be ready for next class by completing the following:

1. **Graded HW 3: In MASTER ASL I text (pg 205) Journal Activity 1 - No Time Extensions!**
2. Post and/or respond in Discussion on Blackboard. (Due next class, 5:30 PM)
3. Practice and review vocab introduced

.....
REMINDERS: No Time Extensions!

1. Essay is due 10/17. The article link is on BlackBoard.
 2. The Midterm Bonus question is due 10/31. Everyone must complete it or lose 20 points from your individual midterm grade. You have the potential to raise your score by 10 points.
 3. The Midterm Exam 'Lesson' is due 10/31. Be sure to have all of the components completed. This is a group project and graded as such.
 4. If you haven't started your book for the art piece, the piece is Part 1 of your Final exam. It is due 11/28. **NO TIME EXTENSIONS!**
 5. If you haven't started preparing for your presentation, it is due (with a visual) on 12/5.
 6. If you are behind on your postings (links and/or responses), 15 (10 links with description, 5 responses) are due **NO LATER THAN 12/5** (15% of your grade)
 7. Outside Visits to Deaf Functions ~ the papers are due by 12/5.
-



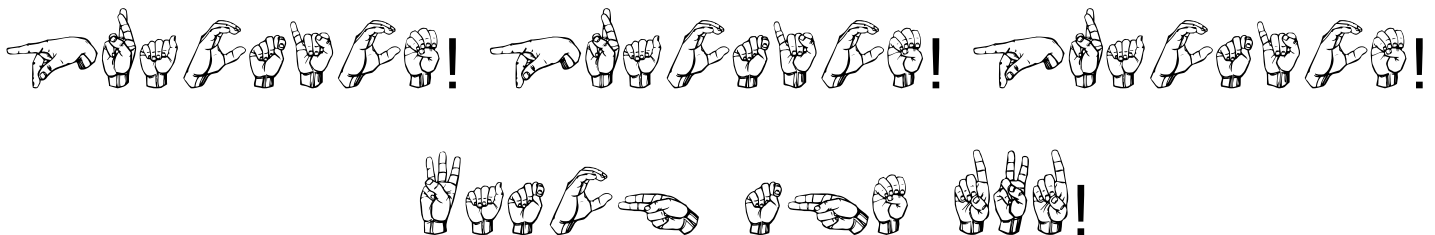
10 October 2016

Tonight we expect to:

1. Collect the HW3
2. Review vocab/concepts introduced in U5;
3. Continue intro of U5 vocab ((pgs 170-189)
4. Practice EX G-Q
5. Workbook Glossing Unit 5
6. Discussion of Journal Activity 2 (pg 205)

Your assignments upon completion of tonight's lesson are to be ready for 10/17 by completing the following:

1. Post and/or respond in Discussion on Blackboard. (Due next class, 5:30 PM)
2. Practice and review vocab introduced.
3. Prepare a 1-3 page (double-spaced, 12 font, .5 margin) letter in response to #3 on page 161 (Journal Activities) in the text. Grammar and spelling counts! This is the **Midterm Bonus** (+10). **Everyone must do this.** If you choose not to do the Bonus it will be (-20) from your individual exam grade! Due 10/31.
4. Essay is due 10/17 **No Time Extensions**
5. Midterm: 'Lesson' is due **10/31**.



17 October 2016

Tonight we expect to:

1. Collect the essay
2. Review vocab/concepts introduced in U5;
3. Continue intro of U5 vocab ((pgs 190-205)
4. Introduce Time Spot, Classifiers
5. **Eyes on ASL 11 & 12**
6. Practice EX R-DD
7. Provide time for the groups to meet for their Midterm 'Lesson'

Your assignments upon completion of tonight's lesson are to be ready for next class by completing the following:

1. In the text, page 206, do **Unit 5 Review C** on **Q4** paper (provided ~ **no time extensions**) This will count as 25% of Q4 grade; the second and third parts of Q4 will be done in class.

2. Review/practice signs introduced in U5

3. Prepare three grammatically correct ASL sentences about your classes. You will sign these to the class. This will be 50% of your Q4 grade. The remaining 25% will be an in-class small group activity. (Due 10/31)

4. **Graded HW 4:** A full page (12 font, double-spaced, .5 margins) critique on the process of working together on your 'Lesson'. This should include a brief description of the topic and how the plans were decided as well as the process of working together. This is NOT a group critique but one done from your point of view. Be honest. No one but me will see this. **No Time Extensions!**

5. Bonus Exam Letter

6. Complete all components of Midterm 'Lesson'

7. **Your discussion postings are easier if kept up with on a weekly basis.**



24 October 2016

This is a class meeting and counts as a Deaf Event!

TBD at TRCC

31 October 2016

Tonight we expect to:

1. Collect the **HW 4**, Written Component for **Q4**, and the **Exam Letter** (Required Bonus)
2. Review vocab/concepts introduced in U5;
3. **Q4**
4. Discuss Homework
5. **Midterm: 'Lesson'**

Your assignment upon completion of tonight's lesson is to be ready for next class by completing the following:

1. In the text, read all of Unit 6 (pages 211-252)
2. In workbook read/complete exercises in Fingerspelling and Numbers, Unit 6.
There is nothing to be submitted in writing.
3. Prepare for **Q5** by reviewing vocab/concepts. Q5 will be an interactive story quiz.
4. Post/respond in Discussion on Blackboard (Due next class by 5:30 PM)



.....
REMINDERS: No Time Extensions!

1. If you haven't started your book for the art piece, the piece is Part 1 of your Final exam. It is due 11/28. **NO TIME EXTENSIONS!**
 2. If you haven't started preparing for your presentation, it is due (with a visual) on 12/5.
 3. If you are behind on your postings (links and/or responses), 15 (10 links with description, 5 responses) are due **NO LATER THAN 12/5** (15% of your grade)
 4. Outside Visits to Deaf Functions ~ the papers are due by 12/5.
-

7 November 2016

Tonight we expect to:

1. Q5
2. Begin intro U6 (pgs. 211-225);
3. Intro. Rule of 9
4. Practice Ex. A-J
5. Discuss pages 226-227

Your assignments upon completion of tonight's lesson are to be ready for next class by completing the following:

1. **Graded HW 5:** Finish the 'Sleeping Puppy' story on page 227. (Due 11/14)
You may use words or take photographs (or if you can draw that's great too!) of the rest of the story. You must add a minimum of 10 to complete the story.
2. In **MASTER ASL I** text, Homework 1B (page 217) ~ be prepared to share (in sign) this info with a partner next class who in turn will voice it to the class;
3. In workbook read Glossing, Unit 6, pages 148-150; Do exercise 4 (page 149). I will randomly select students to write the gloss on the board. (Due 11/14)
4. Post/respond in Discussion on Blackboard (Due by 4/12, 5:30 PM)
5. Prepare 5 grammatically correct questions for the Deaf Awareness Panel.
This will count as Q6 on 4/19. We will review the questions in class. This is a written (glossed if you want) assignment. Note: Make 2 copies



14 November 2016

Tonight we expect to:

1. Share stories (HW 5); Collect HW 5 ~ this is the last of the graded homework assignments; all others are toward participation.
2. Review vocab/concepts;
3. Review Glossing, pg 149, Ex 4
4. Continue intro U6 vocab/concepts ~ classifiers, markers
5. Practice Ex. K-P
6. **Eyes on ASL 13**
7. Collect/Review/Discuss questions for the Deaf Awareness Panel; Keep a copy for yourself!

Your assignments upon completion of tonight's lesson are to be ready for next class by completing the following:

1. Practicing your questions ~ interacting at Deaf Awareness Panel is Q6.

21 November 2016

Tonight we expect to:

1. Eat pizza and 'chat' with our panelists for the first 45 minutes
2. Panel Discussion/Q6 questions

Your assignment upon completion of tonight's lesson is to be ready for next class by completing the following:

1. Complete all components of the Art Project ~ Final Part I (Due 11/28) It must be 'display' ready for our Gallery Night.
2. Work on your presentation (Due 12/5)
3. Reminder: Last time to Post/Respond in Discussion on Blackboard (Due 12/5, 5:30) This is a 'catch up'!
4. Pg. 235 Homework, Ex 5 A2 ~ be prepared to share with a partner
5. Be prepared for Gallery Night! Art piece, all necessary paperwork, signed component.



28 November 2016

Tonight we expect to:

1. Discuss/Process Q6
2. Partner Share Text: Pg. 235 Homework Ex. 5 A2
3. Review info from last class
4. Continue intro U6 vocab/concepts
5. Practice Ex. K-P
6. **Eyes on ASL 13**
7. Beginning after the break: Gallery Night! View the Art and have a 5 minute share (per artist)
8. Sign up for Final Exam Social (12/12)

Your assignments upon completion of tonight's lesson are to be ready for next class by completing the following:

1. Work on your presentation (Due 12/5) NO TIME EXTENSIONS! You may present 'live' or have a 'taped' presentation to share with the class.
2. Catch up posting on discussion board if needed.
3. Prepare a list of words that 'you just have to know!' ~ to be presented following the final. (This is optional.)

5 December 2016

Tonight we expect to:

1. View the presentations
2. Catch-Up if needed
3. Collect 'the list' (optional vocab)

Your assignment upon completion of tonight's lesson is to be ready for next class by completing the following:

1. Reviewing for the Final

Reminder: Last Post/respond in Discussion on Blackboard (Due 12/5)



12 December 2016

Tonight we expect to:

1. Enjoy the final!
2. Present ASL II Certificates
3. Optional Vocab. ~ Your choice of words you just 'have to know'!



Contact Information

When sending an email:

- * Please put "TRCC ASL II" in the subject line.
- * Include both of us in the e-mail.

Office hours: I will be available to meet from 5:00-5:45 PM or by appointment. You will find me in Room D205 E, in the last cubby on the right.

Nate Wheeler

Cell phone: 860-885-4595

Text preferred but a voicemail may be left.

E-mail:

nwheeler@trcc.commnet.edu

nawheeler11@gmail.com



Acknowledgement and Receipt of Syllabus:

American Sign Language II

ASL* K102-T1

CRN: 11635

FALL 2016

Mondays 6-8:45; Room D226

Instructor: Nathan Wheeler, M.S.

I, _____, have read the syllabus and am aware of my responsibilities as a student in Nate Wheeler's ASL II class at TRCC (Norwich, CT).

Name (print): _____

Signature: _____

Date: _____

