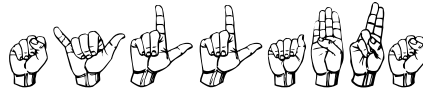


Three Rivers Community College
Norwich, CT 06360



SYLLABUS

American Sign Language II

ASL* K102-T1

CRN: 11635

Spring 2015 (2/3/15-5/19*/15)

*This was a discretionary make-up day. I have opted to hold the final on 5/19/15.

Tuesdays 6:30-9:15 PM; Room D210

Instructor: Paula Rosenberg Bell, M.Ed.

Department: Humanities

Office Hours: prior to class (5:00-6:00PM), by appointment
(see end of syllabus for contact information)

3.0 Credits

ASL* K102-T1 AMERICAN SIGN LANGUAGE II

- This course is a continuation of the study of American Sign Language, the language used by the Deaf Community in the United States. ASL II is an interactive course which focuses on expanding the students' ability to communicate in American Sign Language through classroom instruction and participation as well as out of class readings, practice, and required visitations. The instructional approach will be holistic ~ exploring all aspects of the language - mechanics, culture, environmental concerns, and interpreting.



GOALS & OBJECTIVES

Upon successful completion of ASL II, students will be competent ~ receptively and expressively ~ in the following areas:

- Demonstrate the ability to select, produce, and use appropriate sign vocabulary for clear and accurate communication.
- Apply the appropriate grammar and syntax by using facial expression and body language to communicate in sign language effectively.
- Further develop understanding of Deaf culture, differences between Deaf and Hearing cultures, and insight of the experiences of being deaf when communicating in a hearing world.

COURSE RESOURCES:

- **MASTER ASL! LEVEL ONE** by Jason E. Zinza (Required)* ISBN #: 1-881133-20-6
- **MASTER ASL! FINGERSPELLING, NUMBERS, AND GLOSSING** by Jason E. Zinza (Required)* ISBN#: 978-1-881133-21-6
- Supplemental materials will be provided by the instructor
- Videos and supplementary materials used in class.
- ASL chart (available in TRCC Bookstore) ~ recommended

* This semester (Spring 2015), we will do Units 4-6 in **MASTER ASL! LEVEL ONE** by Jason E. Zinza. In addition, we will use **MASTER ASL! FINGERSPELLING, NUMBERS, AND GLOSSING** by Jason E. Zinza. As with the main text, we will do Units 4-6 Fingerspelling, Units 4-6 Numbers, and Units 4-6 Glossing. This follows the same sequence as UCONN's Sign Language program.

VALUABLE RESOURCES:

*The DVD which accompanies your text book!

www.aslpro.com

www.lifeprint.com

www.signingsavvy.com

<http://aslbrowser.commtechlab.msu.edu/browser.htm>

<http://www.handspeak.com>

PROCEDURE:

1. Classroom instruction of language component.
2. Modeling of target language.
3. Practice using target language in and outside of class.
4. Interaction with native users of target language.
5. In-class discussions, activities and presentations.
6. Off campus activities with written responses/papers.
7. Quizzes & Exams
8. Homework Assignments



REQUIREMENTS:

- HAVE FUN!! Of course since this is Level II, you already know this is a great language to learn!
- Participate.
- Be prepared to learn.
- Complete all assignments ~ they are given to support your learning. All assignments and their due dates are in the agenda. Written assignments may be handed in early but if late will receive a zero.
- Last page of syllabus (acknowledgement and receipt of syllabus) has been signed and given to the instructor (by the end of the 'new' first class meeting ~ 2/3/15) NOTE: This counts as your first quiz grade; not signing = a zero (0).

METHOD OF EVALUATION

Students gain proficiency / mastery at different rates. Each student is capable of achieving proficiency / mastery in ASL and will be given every opportunity to do so. All assessments are weighted and cumulative (based on 100 points). All grades will be posted in BlackBoard (Grading Center) per each assessment. There will be a running total so you'll know exactly what your grade is at any time. Grades will be entered within one week of an assignment's due date.

94 - 100	A
90 - 93	A-
87 - 89	B+
84 - 86	B
80 - 83	B-
77 - 79	C+
74 - 76	C
70 - 73	C-
67 - 69	D+
64 - 67	D
60 - 63	D-
0 - 59	F
Participation/Attendance	10%
Quizzes	5%
Outside Visits to Deaf Functions	15%
Midterm (10%)/Final ~ 2 Parts (20%)	30%
Postings	15%
Essay	5%
Presentation	15%
Homework	5%



•Classroom Participation – 10%

In order to learn American Sign Language, one MUST participate in using it. Attendance will be recorded. I recognize that there are extenuating circumstances where one must miss a class. Please notify me in advance of class if you are going to be absent. (See my contact information on the last page of the syllabus.) You will be allowed one (1) “free” absence that will not impact your grade. Additional absences will be recorded as a zero (0). Leaving class early by 15 minutes (or more) or arriving late by 15 minutes (or more) will result in a lowered participation grade for that class. Class participation will be graded on 100 points at every class meeting as follows: Preparation (this includes all homework/assignment completion), Timeliness, Class Interaction, Focus*, Responses/Volunteerism. * If you are using your cell phone or the like, you will lose participation points and may be asked to leave the classroom.

•Exams– Midterm 10% (3/31/15)

Final 20% (Part 1~5/5/15 ; Part 2~5/19/15)

There will be two exams. The midterm will be small group infomercials which will include the evaluation of expressive/receptive skills as well as a written component (See Midterm Exam Infomercial handout). This will need to be handed in on a DVD or made available as a private YouTube video. The final is in two parts: half of the final (the second half) will be an interactive one where the students demonstrate their knowledge of American Sign Language and Deaf Culture. The first half of the final requires students to create a piece of art which visually connects to the book he/she read. This visual will be shared with the class on 5/5/15 with a 5 minute grammatically correct signed description of the relationship of the visual to the book. The connection should be obvious. **NO TIME EXTENSIONS for Part 1.** There will be **no make-up for the interactive portion of the final (Part 2).** The midterm must be made up within one week unless I have certification of hospitalization for you or a member of your family or a death in the immediate family.

•Quizzes – 5% (6): 2/3, 2/10, 3/3, 3/31, 4/7, and 4/21

Quizzes will be used to assess your progress and to show you where you need to focus your energy. There will be 6 quizzes (lowest grade will be dropped; **Q1 cannot/will not be dropped**). You are signing for your classmates unless otherwise noted.

•Postings– 15% (Due: Last posting no later than 5/5/15 ~ NO TIME EXTENSIONS)

•Presentations– 15% (Due: 5/12 ~ NO TIME EXTENSIONS)

•Essay – 5% (Due 3/24/15 ~ NO TIME EXTENSIONS) See Digication

•Digication ~ All students are required to maintain an online learning portfolio in Digication that uses the college template.

As a student you will maintain an online learning portfolio using a college-designed template in Digication. Through this electronic tool you will have the opportunity to monitor your own growth in college-wide learning. It may even help you determine a major that is best suited to you. You will be able to keep and maintain your learning portfolio after graduation. A Three Rivers General Education Assessment Team will select and review



random works to improve the college experience for all. If your work is selected and reviewed for assessment purposes, it will remain anonymous and private. Digication provides a “place” where you will connect your learning from the classroom, college, and life in general. Sometimes when you review all of the work you have done and think about it, you end up learning something different and perhaps unexpected. Please review your course outlines to determine what assignments* to upload into the TRCC Digication template and please post your own choices, as well. Have fun in learning!

* ASL II Recommendation: Upload your Essay

The Learning Portfolio (Digication)

Login Address: <https://digication.ct.edu>

How-to Documents, Tutorials & Animations

Login to Digication [Document](#) (2 pp) [Show Me](#) (:21)

Starting Portfolio with College Template [Document](#) (4 pp) [Show Me](#) (1:17)

Complete Gen Ed Instructions for Digication [Document](#) (17 pp)

Text Only [Document](#) (2 pp)

Steps to Create and Submit Your Portfolio

1. Upload Your Assignment to the Portfolio [Document](#) (pp) [Show Me](#) (1:30)

2. Create a General Education Portfolio [Document](#) (2 pp)

3. Upload Your Assignment to Your General Education e-Portfolio [Document](#) (4 pp)

4. Submit Your e-Portfolio for Review [Document](#) (5 pp)

5. Verify Your Submission [Document](#) (3 pp)

•Outside Visits to Deaf Functions (with papers –15% (Due by 5/12 ~ NO TIME EXTENSIONS)

•Homework – 5%

All assignments are posted in more than one location in the syllabus. Your ‘ungraded’ homework (reading the text, practice activities) will be part of the your class participation grade. There will be five graded homework assignments that will be either from your text or workbook (**MASTER ASL! LEVEL 1** or **MASTER ASL! FINGERSPELLING, NUMBERS, AND GLOSSING**). Graded homework will be listed as HW 1, HW 2, etc.

MAKE UP WORK:

1. All assignments are due on or before the date posted ~ **no time extensions**.
2. Missed quizzes need to be scheduled with Paula and made up within one week. Any quiz that is not made up will receive a grade of 0. It is the responsibility of the student to make the arrangements.
3. Missed in-class activities cannot be made up due to the nature of the activities.
4. There is no make-up for the final exam; the midterm must be made up within one week.
5. This course does not offer extra credit work. A bonus question is offered on the midterm. (Anyone taking a make-up midterm will not receive the bonus question.)

MISCELLANEOUS EXPECTATIONS AND INFORMATION:

Class begins promptly at 6:30 p.m. and procedures will not be delayed to accommodate late comers. Consistent practice using sign is of utmost importance if students are to master the language. Therefore, students will be expected to spend time outside of class



practicing the language of native signers which students will find helpful to view. Any public library will have or be able to get through inter-library loan videos and books on ASL. You will also be notified of any events where you can have the opportunity to use your new language skills.

EARLY WARNING:

If you are having ANY difficulty, for any reason, please see me as early as possible to discuss ways of assisting you to be successful in this class. I will notify you on 3/10 which is the class before the midterm if your grade is lower than average (C 74–76%).

CANCELLATION (by Instructor): If I need to cancel a class, I will contact each student via email or text. Unless the college cancels classes (ie due to weather), expect to meet for class. In the event of a college closing, I will post the makeup assignment on Blackboard.

WEATHER CLOSINGS (as found in the Student Handbook)

“Weather Related 860.886.0177 – Press 1 for College Closing Announcement

WWW.TRCC.COMMNET.EDU – Announcement posted on main page

Cancellation of classes due to weather will be available by 6:30a for daytime classes and by 3p for evening classes starting at 5p or later. If the off-campus site cancels day and evening services, then classes at that site will not be held. Information will be broadcasted on the following TV stations: Channel 3 – WFSB Hartford, Channel 4, WVIT 30 – NBC Connecticut News 30 and Channel 8 – WTNH New Haven, and the following Radio stations; WSUB/Q105 (Groton/New London), WADK (Westerly), WDRC (Hartford), WTIC/WRCH/WXMX (Hartford), WINY (Putnam), WILI (Willimantic) & WICH/WCTY/WNLC/WKNL (Norwich/New London).

Students can also enroll in the myCommNet Alert system, a notification system that delivers information in the event of an emergency through text messaging over cellular phones, including campus-related health or safety situations and weather-related class cancellations.”

WHAT YOU CAN EXPECT FROM ME:

- To arrive to class on time
 - To be available **by appointment** for discussion on concerns or clarifications of material.
- NOTE:** I teach a Level I class plus 2/3s of a class at TRCC on Monday/Wednesdays and Thursdays and am therefore never available between 2:00 and 5:00 (M/W) or 4–8:30 (Th).
- To be prepared;
 - To hold class for the entire class period;
 - To return corrected work, as often as possible, within one week after it is collected;
 - To give you my best effort in sharing what I know about American Sign Language, Deaf Culture, and the Deaf Community; and
 - To work with each individual by providing guidance to successfully complete this course.

WITHDRAWAL FROM CLASS:

Students may drop courses up to the final drop date (5/11/15) as specified in the academic calendar. Please refer to the **academic calendar** and to page 9 of this syllabus for specific dates. Failure to officially drop the course will result in a grade of F which will be reflected on the transcript.



DISABILITIES STATEMENT:

This course complies with the guidelines set forth under the ADA. Should you need assistance and/or accommodations please privately notify me and provide me with the necessary paperwork during the first two classes. I am unable to make accommodations without the official documentation from one of the college's Disability Service Providers. As outlined in the **Student Handbook**: "Students with disabilities who wish to request academic adjustments or other assistance are encouraged to submit a Disability Self-Disclosure Form, provide disability documentation, and meet with the appropriate Disabilities Service Provider to discuss individual needs. When possible, this process should be completed well before classes begin. Please contact the Counseling and Advising Office for more information."

PLAGIARISM:

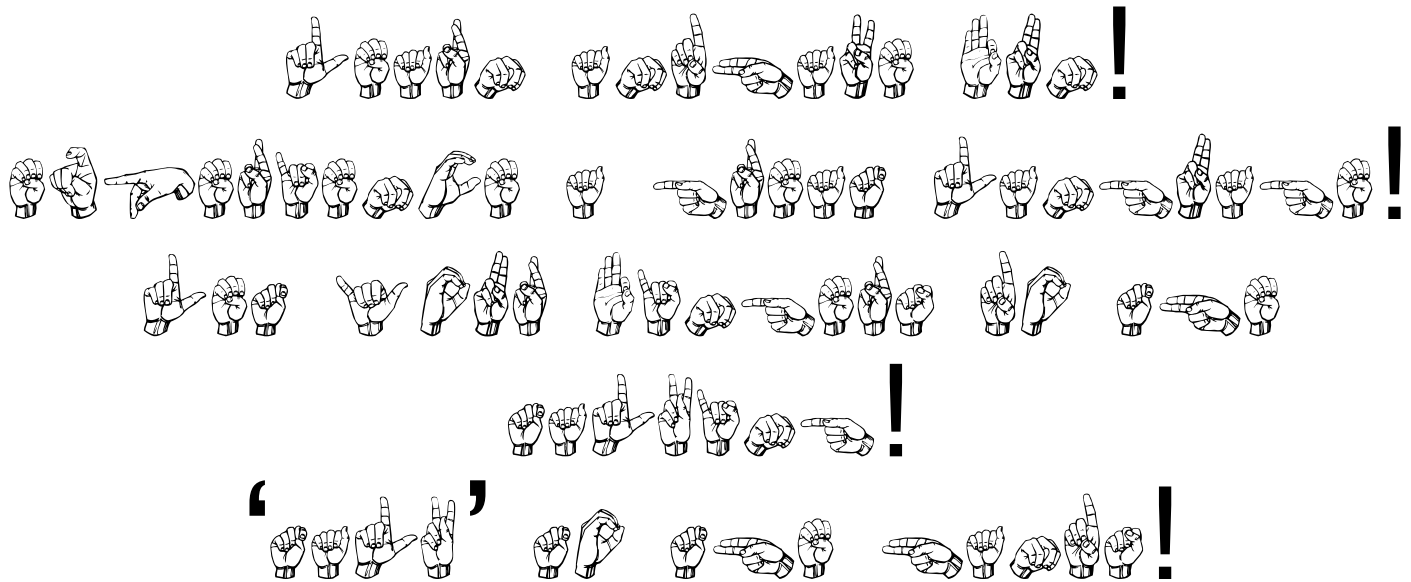
In order to support the process of promoting academic integrity at Three Rivers, any student who plagiarizes work from an outside source or from another student in the class will receive a failing grade for the assignment. I will also follow the process, which is outlined in the Student handbook for anyone who is suspected of Academic dishonesty.

ACADEMIC INTEGRITY (as found in the Student Handbook)

"The effective operation of any organization is dependent on the honesty and goodwill of its members. In an organization devoted to the pursuit of knowledge, acting with integrity is essential to effective teaching and learning. Furthermore, academic dishonesty erodes the legitimacy of every degree awarded by the College. To emphasize the importance of academic integrity, Three Rivers Community College adheres to the following policy in addition to the Student Discipline Policy, sections 2:10 and 3:1-10, as provided by the Board of Trustees of Connecticut Community Colleges. Since collaboration is central to the learning community, Three Rivers wishes to emphasize that this policy is not intended to discourage collaboration when appropriate, approved, and disclosed.
General Definition of Academic Dishonesty

Academic Dishonesty shall in general mean conduct which has as its intent or effect the false representation of a student's academic performance, including but not limited to (a) cheating on an examination, (b) collaborating with others in work to be presented, contrary to the stated College Policies rules of the course, (c) plagiarizing, including the submission of others' ideas or papers (whether purchased, borrowed, or otherwise obtained) as one's own, (d) stealing or having unauthorized access to examination or course materials, (e) falsifying records of laboratory or other data, (f) submitting, if contrary to the rules of a course, work previously presented in another course, and (g) knowingly and intentionally assisting another student in any of the above, including assistance in an arrangement whereby any work, classroom performance, examination or other activity is submitted or performed by a person other than the student under whose name the work is submitted or performed.

Academic integrity is essential to a useful education. Failure to act with academic integrity severely limits a person's ability to succeed in the classroom and beyond. Furthermore, academic dishonesty erodes the legitimacy of every degree awarded by the College. In this class and in the course of your academic career, present only your own best work; clearly document the sources of the material you use from others; and act at all times with honor."




LEARN and have FUN!
Experience a great language!
Let your fingers do the talking!
'Talk' to the hands!



Class Calendar: Spring 2015



DATE 	Lesson	Q u i z	E s s a y	P o s t i n g s	M i d t e r m	F i n a l	I n f o m e r c i a l	Presentation	Home- work Assign- ments (Graded under HW 1-5) Due Dates:
Feb. 3, 2015	Intro and Review via games	Q1							
Feb. 10, 2015	Unit 4/Valentine Voc.	Q2		Yes					
Feb. 17, 2015	Unit 4			Yes					HW 1
Feb. 24, 2015	Unit 4			Yes					HW 2
March 3, 2015	Unit 5	Q3		Yes					
March 10, 2015	Unit 5			Yes					HW 3
March 17, 2015	No Class ~ Spring Break								
March 24, 2015	Unit 5 and time to work on the Midterm Exam Informercial		Yes	Yes					HW 4
March 31, 2015	Midterm Exam: Infomercial; Spring Voc.	Q4			Yes		Yes		
April 7, 2015	Unit 6	Q5		Yes					
April 14, 2015	Unit 6			Yes					HW 5
April 21, 2015	Unit 6/Catch-Up	Q6		Yes					See
April 28, 2015	Panel: Deaf Awareness								Agenda
May 5, 2015	Final Part 1: Art Piece			Yes		Yes			for specific
May 12, 2015	Presentations							Yes	details.
May 19, 2015	Final Part 2; Certificates;					Yes			



IMPORTANT DATES

- Thursday, Jan. 22, 2015 **Classes Begin/Late Registration; add/drop begins**
- Tuesday, Feb. 3, 2015 **First 'rescheduled' day ASL II ~ Welcome!**
- Wednesday, Jan. 28, 2015 **Instructor signature required to add classes**
- Wednesday, Feb. 4, 2015 **Last day of Add/Drop & partial tuition refund for 15 week classes**
- Thursday, Feb. 5, 2015 **All College Professional Day ~ Classes not in session**
- Wednesday, Feb. 18, 2015 **Last day to put a class on Audit**
- March 15-22, 2015 **Spring Break ~ Classes NOT in session**
- Wednesday, April 8, 2015 **Last Day to Select Pass/Fail Option for 15 Week Session**
- Monday May 11, 2015 **Last day to withdraw from classes**
- Tuesday, May 19, 2015 **ASL II Final Class/Final Exam Part 2**



THREE RIVERS COMMUNITY COLLEGE
NORWICH, CT

AMERICAN SIGN LANGUAGE II: ASL* K 102-T1 CRN: 11635

INSTRUCTOR: Paula Rosenberg Bell, M.Ed.

SPRING SESSION: 2015

Room D 210; 6:30-9:15 PM, Tuesdays 2/3/15-5/12/19

3 Credits

3 February 2015

Tonight I expect to:

1. Complete the People Scavenger Hunt
2. Introductions
3. 'Housekeeping' ~ food, beverages, leaving, room set-up
4. Introductions to the course: requirements, agenda, exam (infomercial, art project, and dinner), presentations, discussion board, outside visits, et al
5. Concept review via activities
6. ABC and Number Review via activities
7. Collect Q1: **Acknowledgement and Receipt of Syllabus**

Your assignments upon completion of tonight's lesson are to be ready for 2/10 by completing the following:

1. Do the Units 1-3 Review in the text (pgs 115-118)/ There is nothing to be written.
2. In **MASTER ASL I** text, read Chapter 4; when you are directed to view the DVD please do so. This is background info ~ don't worry about the signs (please don't try to learn them on your own) I will be introducing all of the signs. I don't want you to practice any bad habits. Please make note of any questions you have about what you've read. Write the questions on post it notes and stick them on the board for me to answer. (Due 2/10)
3. Review: Syllabus and handouts (Due 2/10)
4. Prep for Q2 (written quiz on info from the syllabus and handouts) (Due 2/10)
5. In the workbook: Read FS Unit 4, Numbers Unit 4.
6. Post/respond in Discussion on Blackboard (Due 2/10)



10 February 2015

Tonight I expect to:

1. Do Q2
2. Drill FS/#s in the workbook (pg 18, Ex 1, Pg. 22 Ex 11, pg 84 Ex. 1 & 3)
3. Introduce Gender
4. Introduce Shoulder-Shifting
5. Introduce the Age-Spot
6. Begin introduction of Unit 4 Vocab/Concepts (pgs123-143)
7. **Eyes on ASL 8 & 9**
8. Practice Exercises A-M
9. Introduce Valentine Vocab.



Your assignments upon completion of tonight's lesson are to be ready for 2/17 by completing the following:

1. Graded HW 1: In our text, page 125, Ex. 1 ~ Do A and C. A will be shared in class, C will be collected and graded. Due 2/17 **No Time Extensions!**
2. Practice and review vocab introduced on 2/10.
3. Post and/or respond in Discussion on Blackboard (Due 2/17)

I KNOW
SIGN LANGUAGE
—WHAT'S YOUR—
SUPERPOWER?



17 February 2015

Tonight I expect to:

1. Collect Graded HW 1
2. Review/discuss glossing of Ex C;
3. Continue Unit 4 Vocab/Concepts (pgs 144-159)~Error Correction, Describing
4. Practice exercised N-Z

Your assignments upon completion of tonight's lesson are to be ready for 2/24 by completing the following:

1. In the workbook, read Unit 4 **Glossing**, pages 141-144; Do the practice activities.
2. Graded HW 2: Ex. 2, 4, 6 (Workbook pgs. 141, 142, 144. Use the worksheet provided on 2/3. (Due 2/24)
3. Post and/or respond in Discussion on Blackboard (Due 2/24)
4. Practice and review vocab introduced on 2/10, 2/17



24 February 2015

Tonight I expect to:

1. Collect Graded HW 2
2. Review vocab/concepts introduced in U4;
3. Complete (if needed) U4 vocab.
4. Play “Who Am I?”

Your assignments upon completion of tonight’s lesson are to be ready for 3/3 by completing the following:

1. Q3: In **MASTER ASL I** page 162, Review B in Unit 1 Review; Write answers to part B on Quiz 3 paper (provided ~ due 3/3 ~ **no time extensions**) This will count as 25% of your Q3 grade ; the second and third parts of Q3 will be done in class.
2. Prepare three grammatically correct ASL sentences about your family. You will sign these to the class. This will be 50% of your Q3 grade. The remaining 25% will be an in-class small group activity. (Due 3/3)
3. In the workbook, read/practice FS/Numbers Unit 5; Prep for Ex. 4 (page 93 ~ I will randomly select students to sign one of the sentences on 3/3). This is not a separate homework grade but will be part of your participation grade.
4. In the text, pg. 175 Homework Exercise 2, A ~ I will randomly ask students to put their lists on the on the board (3/3) for discussion; I will look at everyone’s lists ~ this is not a separate homework grade but will be part of your participation grade.
5. Post and/or respond in Discussion on Blackboard. (Due 3/3)
6. Practice and review vocab introduced on 2/24
7. Read Unit 5, text ~ pgs 167-205



3 March 2015

Tonight I expect to:

1. Collect the written component for **Q3**
2. Review vocab/concepts introduced in U4;
3. Q3
4. Review homework: Students will be randomly selected to share from Workbook Ex. 4 (pg. 93) and text Homework Ex. 2A (pg. 175)
5. Begin U5 vocab. (pgs. 167-175), practice exercises A-F

Your assignments upon completion of tonight's lesson are to be ready for 3/10 by completing the following:

1. **Graded HW 3:** In **MASTER ASL I** text (pg 205) Journal Activity 1 (due 3/10) **No Time Extensions!**
2. Post and/or respond in Discussion on Blackboard. (Due 3/10)
3. Practice and review vocab introduced on 3/3
4. Midterm: Infomercial is due **3/31**.
5. Workbook: Read Glossing Unit 5

.....
REMINDERS: No Time Extensions!

1. Essay is due 3/24. The article link is on BlackBoard in addition to the print copy you rec'd on 2/3/15.
 2. The Midterm Bonus question is due 3/31. Everyone must complete it or lose 10 points from your individual midterm grade. You have the potential to raise your score by 10 points.
 3. The Midterm Exam Infomercial is due 3/31. Be sure to have all of the components completed. Have a DVD or private YouTube setting for your Infomercial. This is a group project.
 4. If you haven't started your book for the art piece, the piece is Part 1 of your Final exam. It is due 5/5. **NO TIME EXTENSIONS!**
 5. If you haven't started preparing for your presentation, it is due (with a visual) on 5/12.
 6. If you are behind on your postings (links and/or responses), 15 (10 links with description, 5 responses) are due **NO LATER THAN 5/5/15** (15 % of your grade)
 7. If you haven't done any Outside Visits to Deaf Functions ~ the papers are due by 5/12.
-



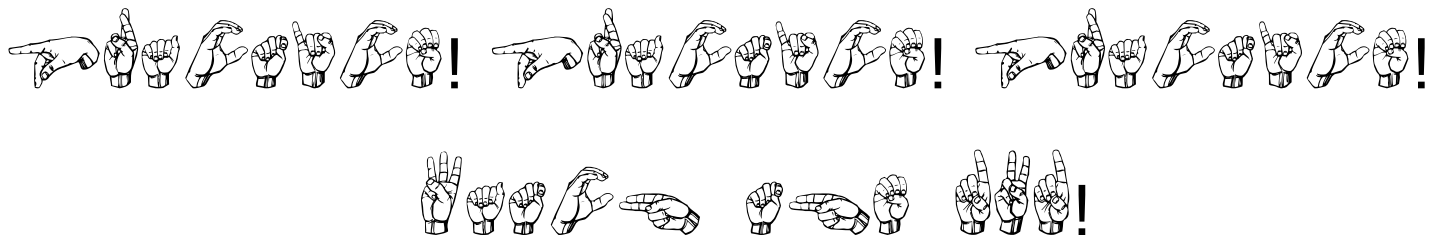
10 March 2015

Tonight I expect to:

1. Collect the HW3
2. Review vocab/concepts introduced in U5;
3. Continue intro of U5 vocab ((pgs 170-189)
4. Practice EX G-Q
5. Workbook Glossing Unit 5
6. Discussion of Journal Activity 2 (pg 205)

Your assignments upon completion of tonight's lesson are to be ready for 3/24 by completing the following:

1. Post and/or respond in Discussion on Blackboard. (Due 3/24)
2. Practice and review vocab introduced on 3/10
3. Prepare a 1-3 page (double-spaced, 12 font, .5 margin) letter in response to #3 on page 161 (Journal Activities) in the text. Grammar and spelling counts! This is the **Midterm Bonus** (+10). **Everyone must do this.** If you choose not to do the Bonus it will be (-10) from your individual exam grade! Due 3/31.
4. Essay is due 3/24 **No Time Extensions**
5. Midterm: Infomercial is due **3/31**.
6. Post/respond in Discussion on Blackboard (Due 3/24)
7. Enjoy your Spring Break !! No class on 3/17!!!!



17 March 2015
SPRING BREAK ~ No Class

24 March 2015

Tonight I expect to:

1. Collect the essay
2. Review vocab/concepts introduced in U5;
3. Continue intro of U5 vocab ((pgs 190-205)
4. Introduce Time Spot, Classifiers
5. **Eyes on ASL 11 & 12**
6. Practice EX R-DD

Your assignments upon completion of tonight's lesson are to be ready for 3/31 by completing the following:

1. In the text, page 206, do **Unit 5 Review C** on **Q4** paper (provided ~ due 3/31 ~ **no time extensions**) This will count as 25% of Q4 grade; the second and third parts of Q4 will be done in class.
2. Review/practice signs introduced in U5
3. Prepare three grammatically correct ASL sentences about your classes. You will sign these to the class. This will be 50% of your Q4 grade. The remaining 25% will be an in-class small group activity. (Due 3/31)
4. **Graded HW 4**: A full page (12 font, double-spaced, .5 margins) critique on the process of working together on your Infomercial. This should include a brief description of the topic and how it was decided as well as the process of working together. This is NOT a group critique but one done from your point of view. Be honest. No one but me will see this. **No Time Extensions!** (Due 3/31)
5. Bonus Exam Letter (see 3/10, Assignment 3)
6. Complete all components of Infomercial



31 March 2015

Tonight I expect to:

1. Collect the **HW 4**, Written Component for **Q4**, and the **Exam Letter** (Required Bonus)
2. Review vocab/concepts introduced in U5;
3. **Q4**
4. Discuss Homework
5. **Midterm: Infomercials**
6. Spring Vocab.

Your assignments upon completion of tonight's lesson are to be ready for 4/7 by completing the following:

1. In the text, read all of Unit 6 (pages 211-252)
2. In workbook read/complete exercises in Fingerspelling and Numbers, Unit 6.
There is nothing to be submitted in writing.
3. Prepare for **Q5** by reviewing vocab./concepts. Q5 will be an interactive story quiz. No writing.
4. Post/respond in Discussion on Blackboard (Due 4/7)



14 April 2015

Tonight I expect to:

1. Collect HW 5 ~ this is the last of the graded homework assignments; all others are toward participation.
2. Review vocab/concepts;
3. Review Glossing, pg 149, Ex 4
4. Continue intro U6 vocab/concepts ~ classifiers, markers
5. Practice Ex. K-P
6. **Eyes on ASL 13**

Your assignments upon completion of tonight's lesson are to be ready for 4/21 by completing the following:

1. Text: Pg. 235 Homework Ex. 5 A2. Prepare to share with a partner (in sign) who in turn will voice it to the class. Due 4/21.
2. Post/respond in Discussion on Blackboard (Due 4/21)
3. Prepare 5 grammatically correct questions for the Deaf Awareness Panel. This will count as Q6 on 4/28. We will review the questions in class on 4/21. This is a written (glossed if you want) assignment.

21 April 2015

Tonight I expect to:

1. Discuss Q6~ and then collect the questions. Keep a copy for yourself to practice.
2. Partner Share Text: Pg. 235 Homework Ex. 5 A2
3. Review info from 4/14
4. Continue intro U6 vocab/concepts
5. Practice Ex. K-P
6. **Eyes on ASL 13**

Your assignments upon completion of tonight's lesson are to be ready for 4/28 by completing the following:

1. Practice your questions for the panel.
2. Work on the Art Project ~ Final Part I (Due 5/5)
3. Work on your presentation (Due 5/12)



28 April 2015

Tonight I expect to:

1. Eat pizza and 'chat' with our panelists for the first :45 minutes
2. Panel Discussion/Q&A questions

Your assignments upon completion of tonight's lesson are to be ready for 5/5 by completing the following:

1. Complete all components of the Art Project ~ Final Part I (Due 5/5) It must be 'display' ready for our Gallery Night.
2. Work on your presentation (Due 5/12)

5 May 2015

Tonight I expect to:

1. View the Art
2. Have a 5 minute (per artist) share
3. Sign up for Final Exam Dinner (5/19)

Your assignment upon completion of tonight's lesson is to be ready for 5/12 by completing the following:

1. Complete your presentation for a live performance or a taped one. (Due 5/12)

12 May 2015

Tonight I expect to:

1. View the Presentations
2. Catch-Up if needed

Your assignment upon completion of tonight's lesson is to be ready for 5/19 by completing the following:

1. Reviewing for the Final (Due 5/19)

12 May 2015

Tonight I expect to:

1. Enjoy the final
2. Present ASL II Certificates
3. Optional Vocab. ~ yes there are MORE of those words!



Contact Information

Paula Rosenberg Bell

Note: I prefer to be called by my first name.

Cell phone: 860-377-7101 V/T. If I don't answer leave a voice message or text (preferred).

E-mail: pbell@qvcc.commnet.edu (college)

Note: Please put TRCC ASL II in the subject line. If I don't recognize your email, I won't open it.

Office hours: I will be available to meet from 5:00-6:00 PM or by appointment in D205, Cubby 1 (on the left when entering the room).



Acknowledgement and Receipt of Syllabus:

American Sign Language II

ASL* K102-T1

CRN: 11635

SPRING 2015

Tuesdays 6:30-9:15; Room D 210

Instructor: Paula Rosenberg Bell, M.Ed.

I, _____, have read the syllabus and am aware of my responsibilities as a student in Paula Rosenberg Bell's ASL II class at TRCC (Norwich, CT).

Name (print): _____

Signature: _____

Date: _____

