

# Three Rivers Community College

## Wireless Network

TRCC's Information Technology Division now offers free wireless network connectivity for students. The network grants students high-speed access to the Internet from the Cafeteria.

Wi-Fi connection requires a laptop with a wireless networking card (*We recommend an 802.11a/b/g wireless adapter if you want to access our wireless network*). The average wireless card is readily available at most retailers for around \$50.

Complete printable information detailing the hardware required and how to access the wireless network from your laptop can be found on the Ticket to I.T. CD-ROM under the Wireless Network Section. Printed instructions for configuring your computer can also be obtained by visiting the Information Technology Service office in C-Wing Room 113 or the General Purpose Computer Lab/Open Lab located in the E-Wing room 112. Ticket to I.T. CD's can be requested from the Distance Learning & Educational Technology department, currently located in the F-Wing room 211.

If you have questions, please contact the Help Desk at:

**PHONE:** 860.885.2334

**ROOM:** C113.

**E-MAIL:** [ITHELP@TRCC.COMMNET.EDU](mailto:ITHELP@TRCC.COMMNET.EDU)

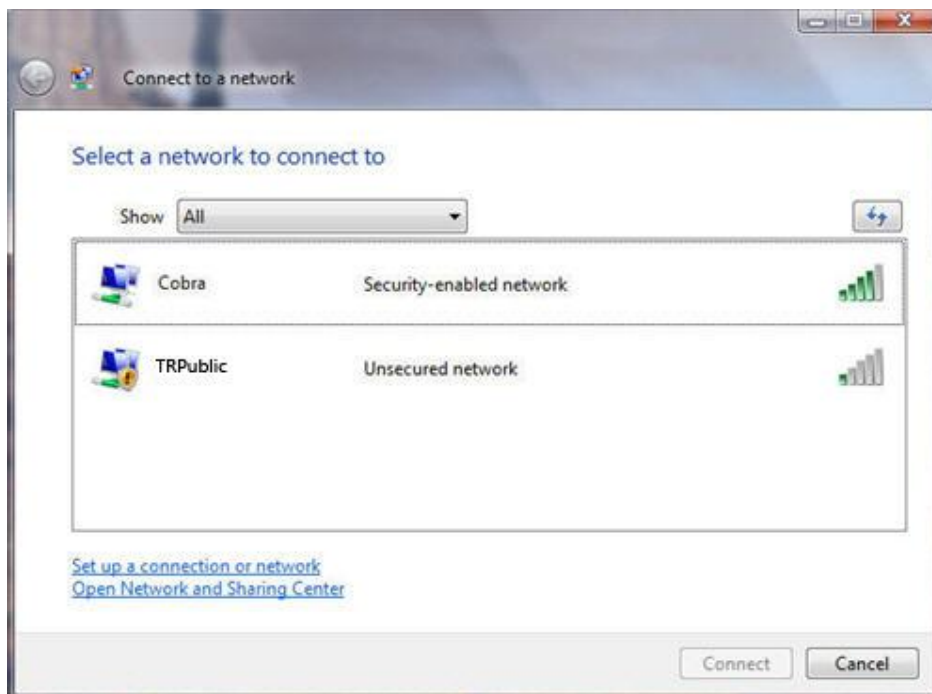
# Connecting your laptop to the TRCC Wireless Connection

## Steps You Must Take

### PC Instructions (Vista):

To locate a wireless network with the Windows Vista\* operating system, follow these steps:


1. Choose the “**Connect To**” **Connect To** item from the Start menu.  
*The “Connect to a Network” window appears. The wireless networks broadcasting within range of your laptop's wireless networking card are shown in the Wireless Network Connection area.*
2. Choose the network labeled “**TRPublic**” from the list to highlight it.



3. Click the Connect button.  
*Windows will attempt to connect to the network.*

4. Launch your preferred web browser; you will be presented with a log-in portal.

5. In the box labeled “**User Name**” enter your Student ID  
Eight (8) digit number portion only.



https://2.2.2.2/login.html?redirect=livepage.apple.com/

THE 208 BES... York Post THE 208 BES... York Post Fuse.tv - G...se TV shows Fus

## Login

Welcome to the TRCC Wireless Environment  
You must have an account at TRCC to access this system.

User Name

Password

6. Enter your TRCC Network password

7. Click the “**Submit**” button.


You are now connected and ready to use the Internet. A wireless networking icon appears in the notification area on the taskbar, showing that you're connected; point the mouse at that icon for more information.\*\*

*\*WARNING: Windows' Vista users may experience connectivity issues or increased lag time when using the TRCC wireless network.*

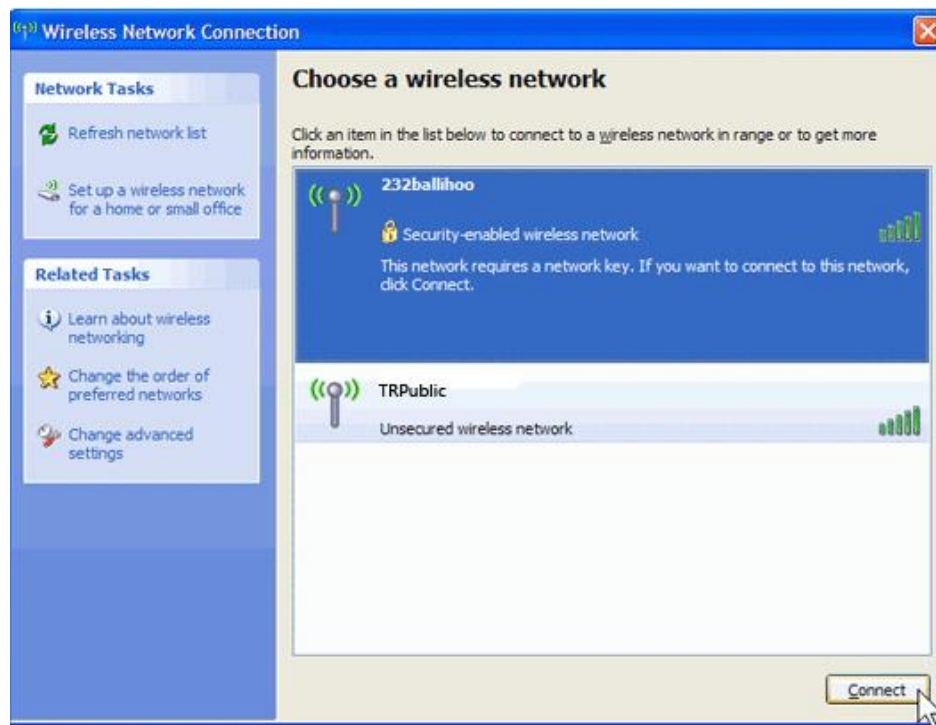
*\*\*It is important to note that the wireless network does have a timeout feature, of two (2) hours.*

## PC Instructions (XP):

To locate a wireless network with the Windows XP operating system, follow these steps:

1. Right-click the wireless network icon  in the lower right corner of your screen, and then click View Available Wireless Networks.

2. The **Wireless Network Connection** window will appear, displaying the wireless networks broadcasting within your range. If you don't see the TRCC network (*TRPublic*), click Refresh network list in the upper left corner. Click your network, and then click Connect in the lower right corner.




3. Click the **“TRPublic”** network to select it, then click the **“Connect”** button.

*Windows will attempt to connect to the network.*

4. Launch your preferred web browser; you will be presented with a log-in portal.

5. In the box labeled “**User Name**” enter your Student ID  
Eight (8) digit number portion only.



https://2.2.2.2/login.html?redirect=livepage.apple.com/

THE 208 BES... York Post THE 208 BES... York Post Fuse.tv - G...se TV shows Fus

## Login

**Welcome to the TRCC Wireless Environment**  
You must have an account at TRCC to access this system.

User Name


Password

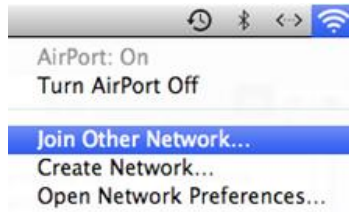
6. Enter your TRCC Network password
7. Click the “**Submit**” button.

You are now connected and ready to use the Internet. A wireless networking icon appears in the notification area on the taskbar, showing that you're connected; point the mouse at that icon for more information.\*\*

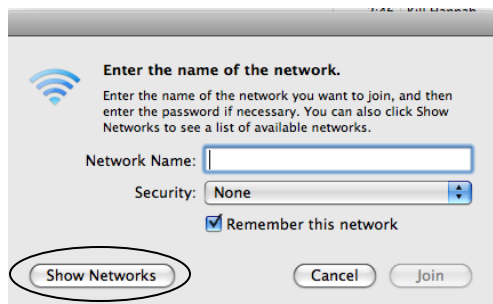
*\*\*It is important to note that the wireless network does have a timeout feature, of two (2) hours.*

## MAC Instructions (auto connect):

1. Click on the airport icon  located in the top right hand corner of the finder bar. .
2. Select **“Join Other Network.”**



3. From the resulting menu select the button labeled **“Show Networks”**



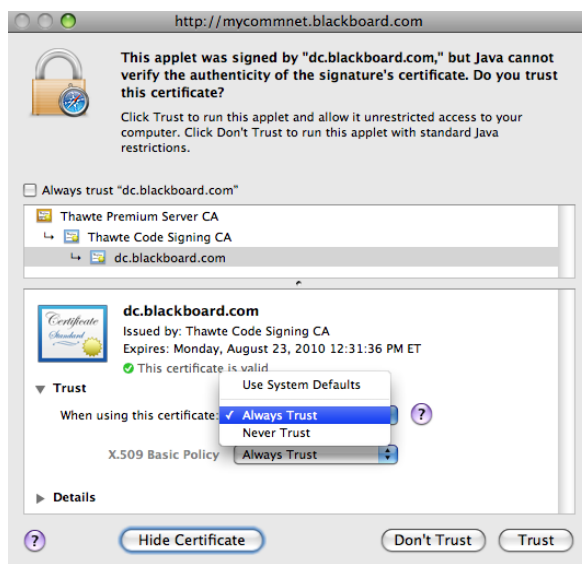
4. Double click the network labeled **“TRPublic”**



5. Launch your preferred web browser; you will be presented with a certificate approval window. Click the button labeled “**Show Certificate**”



6. To the left of the option labeled “**Trust**” you will see a small gray triangle ▾, click it to expand the option. Then, select “**Always Trust**,” lastly click the “**Trust**” button.



7. You will be presented with the web authentication portal. In the box labeled “**Username**” enter you student ID (*eight (8) digit number portion only*).



8. In the box labeled “**Password**” type your TRCC network password.
9. Click the “**Submit**” button.
10. You are now connected and ready to use the Internet.

*\*It is important to note that the wireless network does have a timeout feature, of two (2) hours.*

## **WHAT TO DO IF THINGS DON'T WORK**

1. Make sure that your equipment is configured correctly and is functioning without incident. Ask your service provider to check your equipment and configurations if you cannot do so.
2. If you are still experiencing problems call or stop by the **I.T. Help Desk** to report a possible wireless access problem or request assistance.
  - i. ***Phone: 860.885.2334***
  - ii. ***Office: C-Wing Room 113***
3. Having trouble connecting and you're sure you have the correct log-in information? If you were previously a student at any of the other twelve (12) community colleges in Connecticut prior to ever attending TRCC, your account is held and maintained by that college. Unfortunately, this means that you will be unable to utilize TRCC's wireless network. For more information, contact the I.T. Help Desk.

## **IMPORTANT**

The Information Technology Division is responsible solely for the wireless network access points and cannot perform service on your system, configuration, or components. The student is fully responsible for maintaining and troubleshooting everything beyond the wireless access points (including the computer, wireless card, software setup and configuration).

Please let us know if you discover problems with this documentation!